

# Using WinSCP file transfer software with the 3920B



# What is WinSCP

---

WinSCP (Windows Secure copy) is an open source SFTP and FTP client for Microsoft Windows®. Its main function is secure file transfer between a local and a remote computer.

The 3920B is a Linux® based computer so it can use this FTP client to easily move files to and from the 3920B.

Download the portable executable version of the released version of WinSCP.

WinSCP can be obtained from the following link:

<http://winscp.net/eng/download.php>

# Using WinSCP with the 3920B

Find your PC's network address.

On Windows computers, press the "START"

At the "Search" prompt type "CMD"

At the "DOS" prompt type "ipconfig" this will inform you as to the address of your PC.

```
C:\WINDOWS\system32\cmd.exe
Microsoft Windows XP [Version 5.1.2600]
(C) Copyright 1985-2001 Microsoft Corp.

C:\>ipconfig

Windows IP Configuration

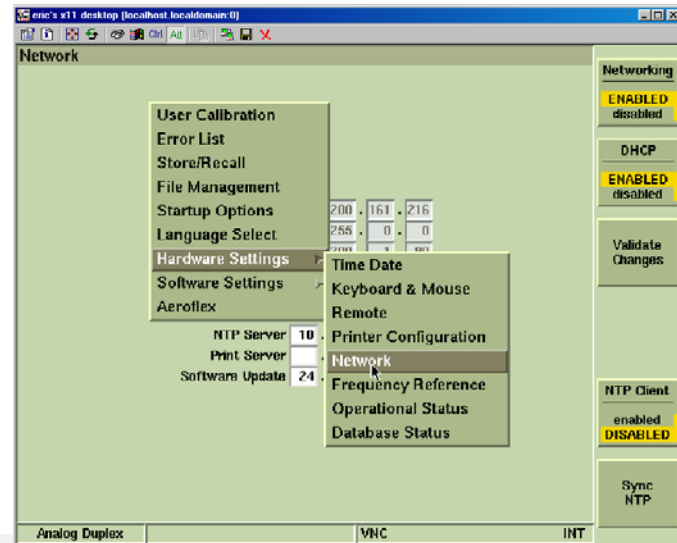
Ethernet adapter Local Area Connection:

    Connection-specific DNS Suffix  . : wic.aeroflex.com
    IP Address. . . . .                : 10.200.162.50
    Subnet Mask . . . . .              : 255.255.0.0
    Default Gateway . . . . .          : 10.200.1.90

C:\>_
```

Make the address on your 3920B compatible with your PC's address.

On the 3920B front Panel press the "UTILS" key twice to view the drop down menu. Select "Hardware Settings" then "Network".





# Using WinSCP with the 3920B

For STATIC IP mode:

Enable Networking

Disable DHCP

Make the address on your 3920B compatible with your PC's address.

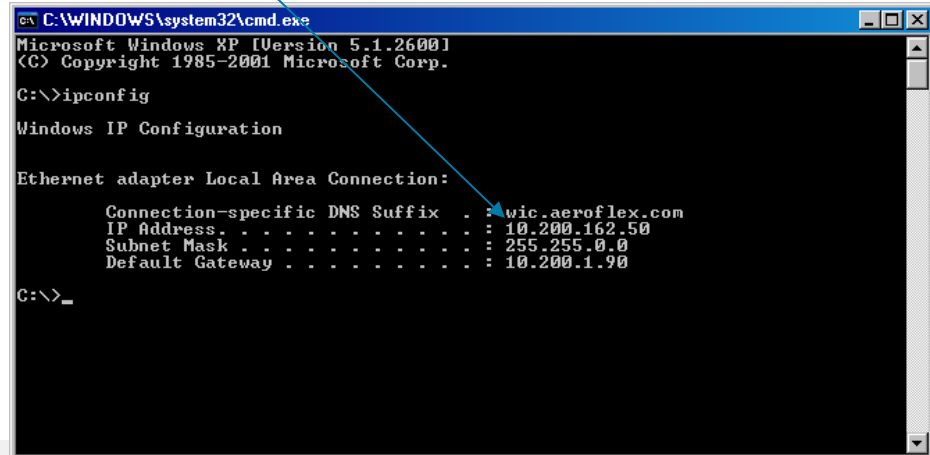
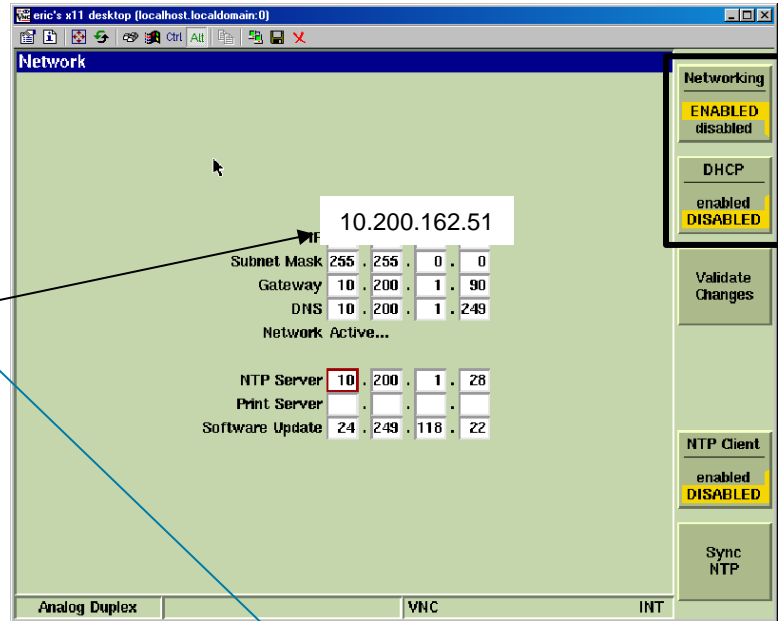
In the IP field, set the last digits to something different than the PC.

PC: 10.200.162.50

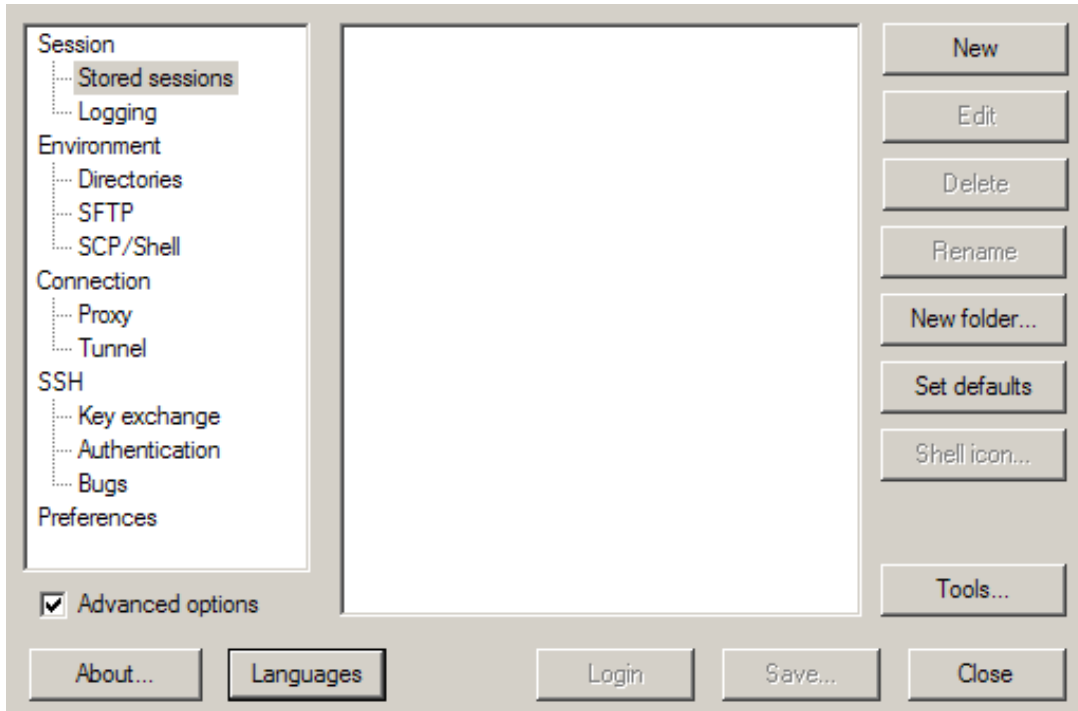
3920B: 10.200.162.51

The two devices must be different addresses.

Note: If on a DHCP network, the network server will assign an IP address to both the PC and the 3920B. For this type of connectivity, simply Enable DHCP on the 3920B.

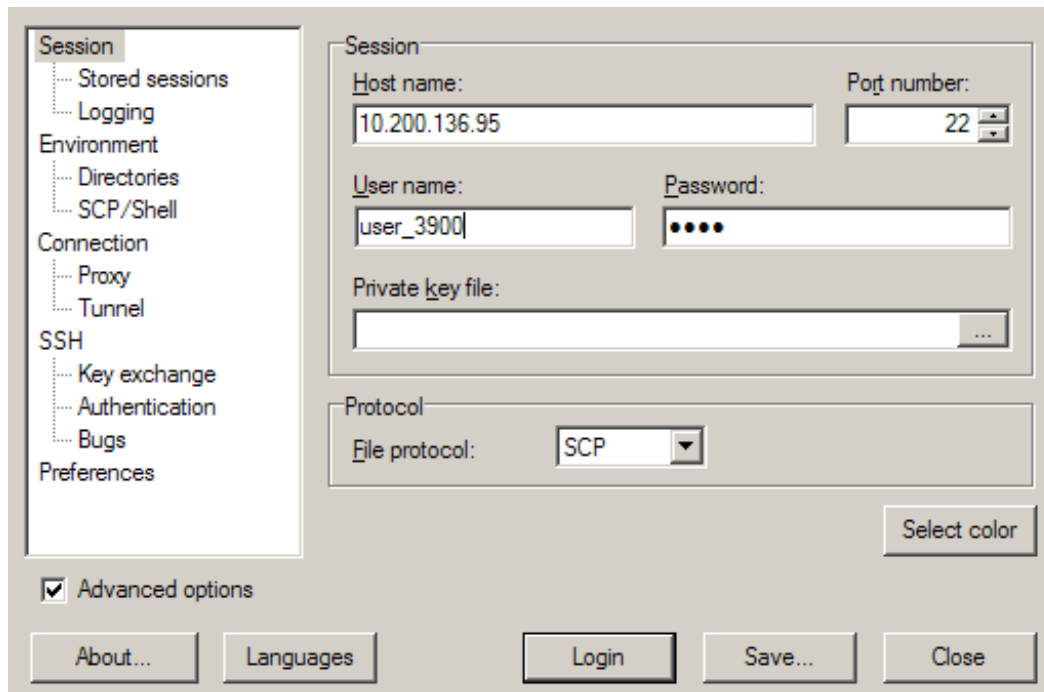


# Using WinSCP with the 3920B

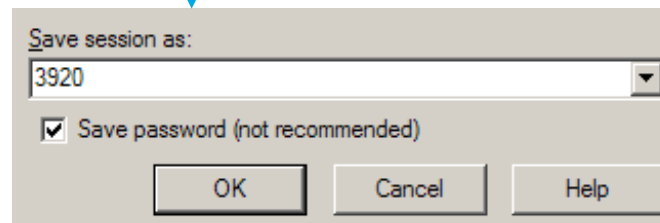


Select New to configure a new session.

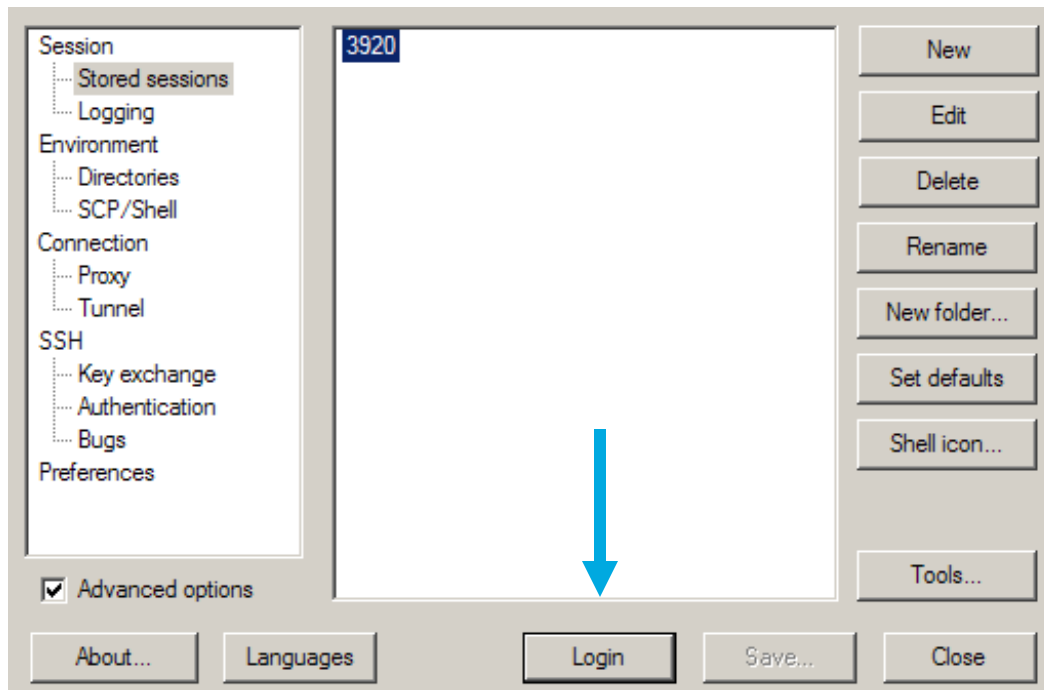
# Using WinSCP with the 3920B



1. Set Host name to the same **IP address** as the 3920B.
2. Set the User name to **user\_3900**.
3. Set the Password to **3900**.
4. Set the File protocol to **SCP**.
5. Save this configuration for future use.



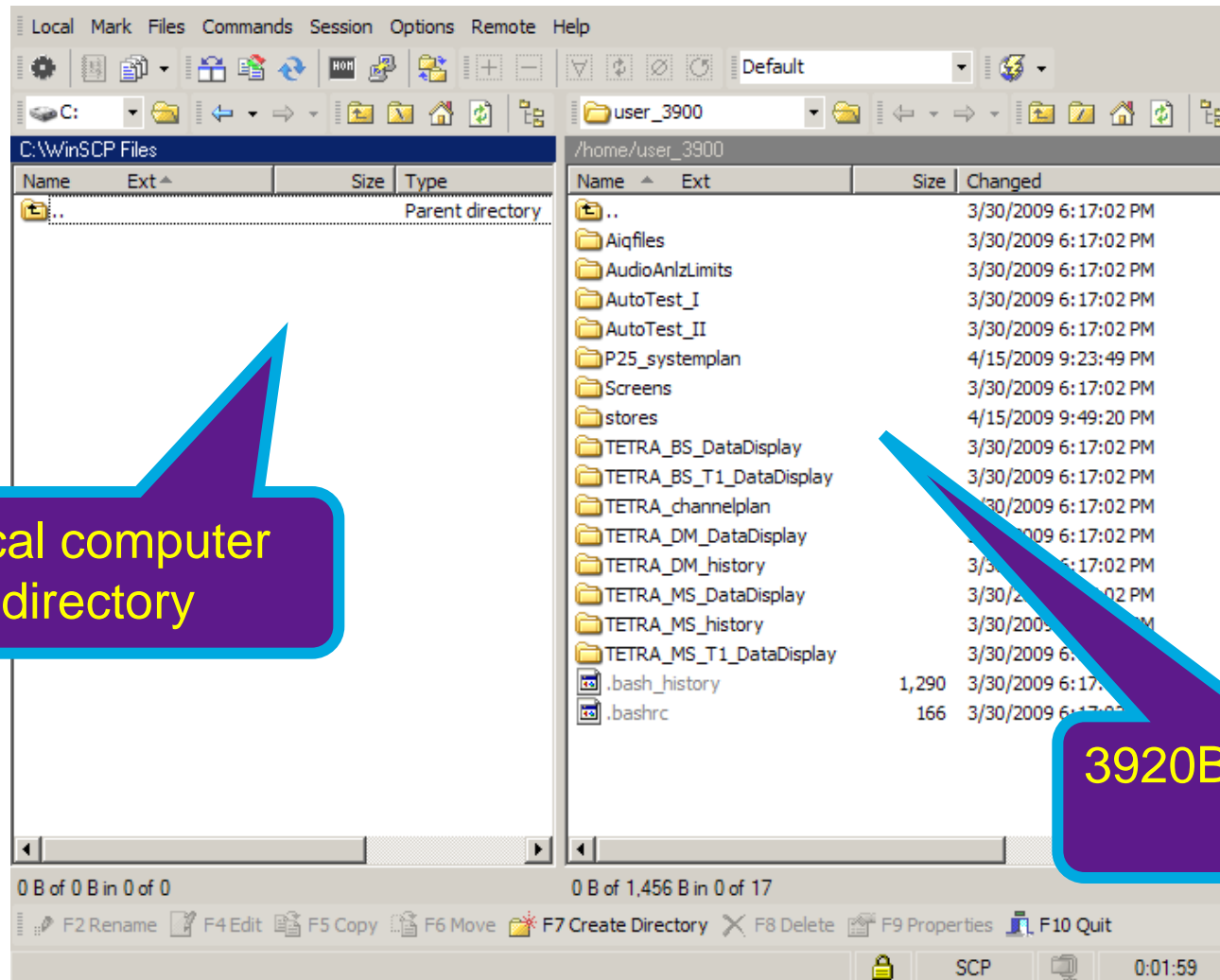
# Using WinSCP with the 3920B



1. Select Login



# Using WinSCP with the 3920B



Local computer directory

3920B user access files

# Using WinSCP with the 3920B

---

## 3920B File Areas:

**Aiqfiles** – Storage area if files created with IQ Creator software. This is a part of 390XOPT54.

**AudioAnlz Traces** – Storage area for Audio Analyzer trace files. This is a part of 390XOPT55.

**Auto-Test\_I** – Storage area for the original Auto-Test scripts.

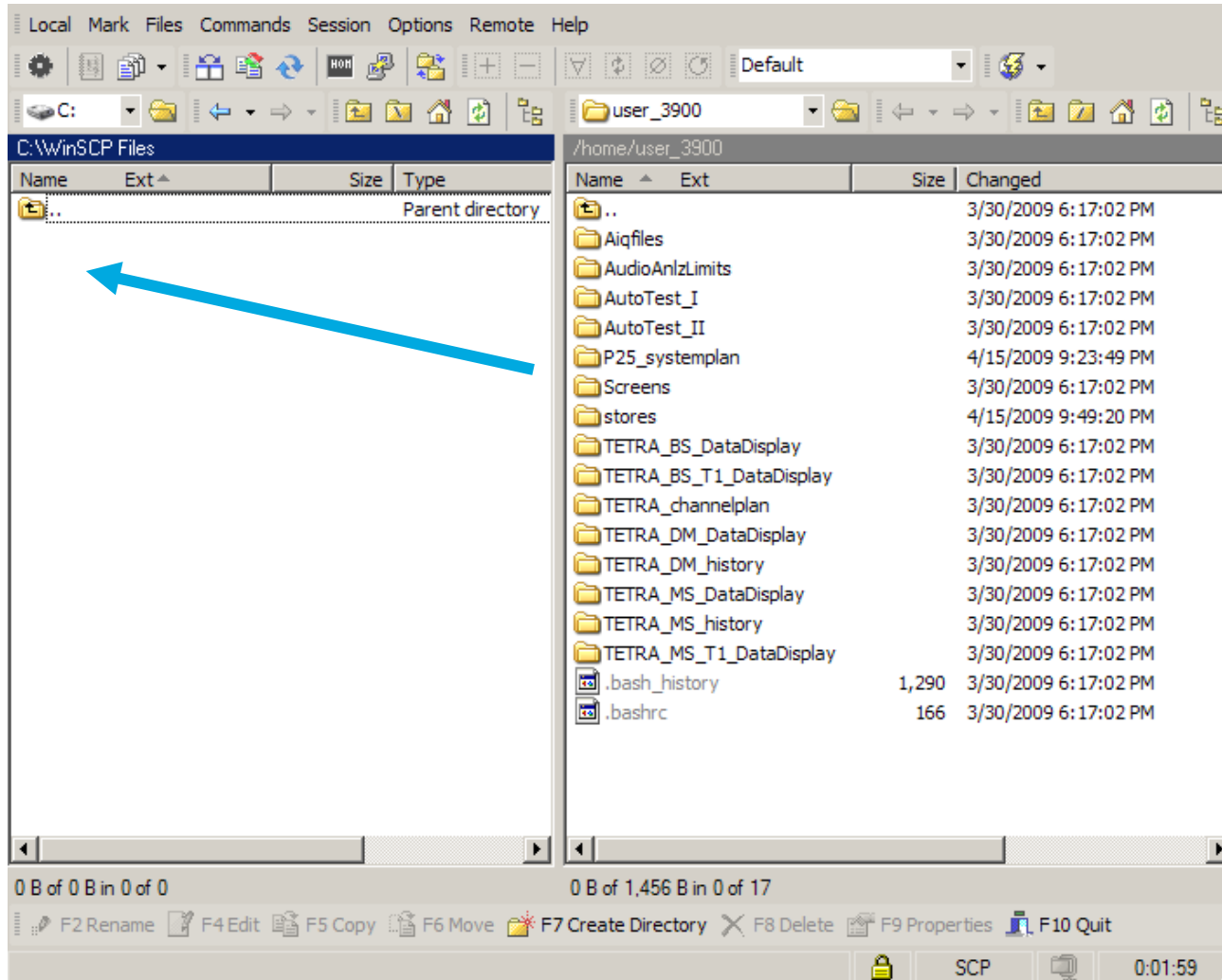
**Auto-Test\_II** – Storage area for Auto-Test II scripts and results files.  
**You will need to drill down to your radio of interest. For example:  
Auto-Test II/Scripts/Kenwood NX/Results**

**P25\_systemplan** – Storage area for P25 Trunking System plans. This is a part of 390XOPT201.

**Screens** – Stored screen images.

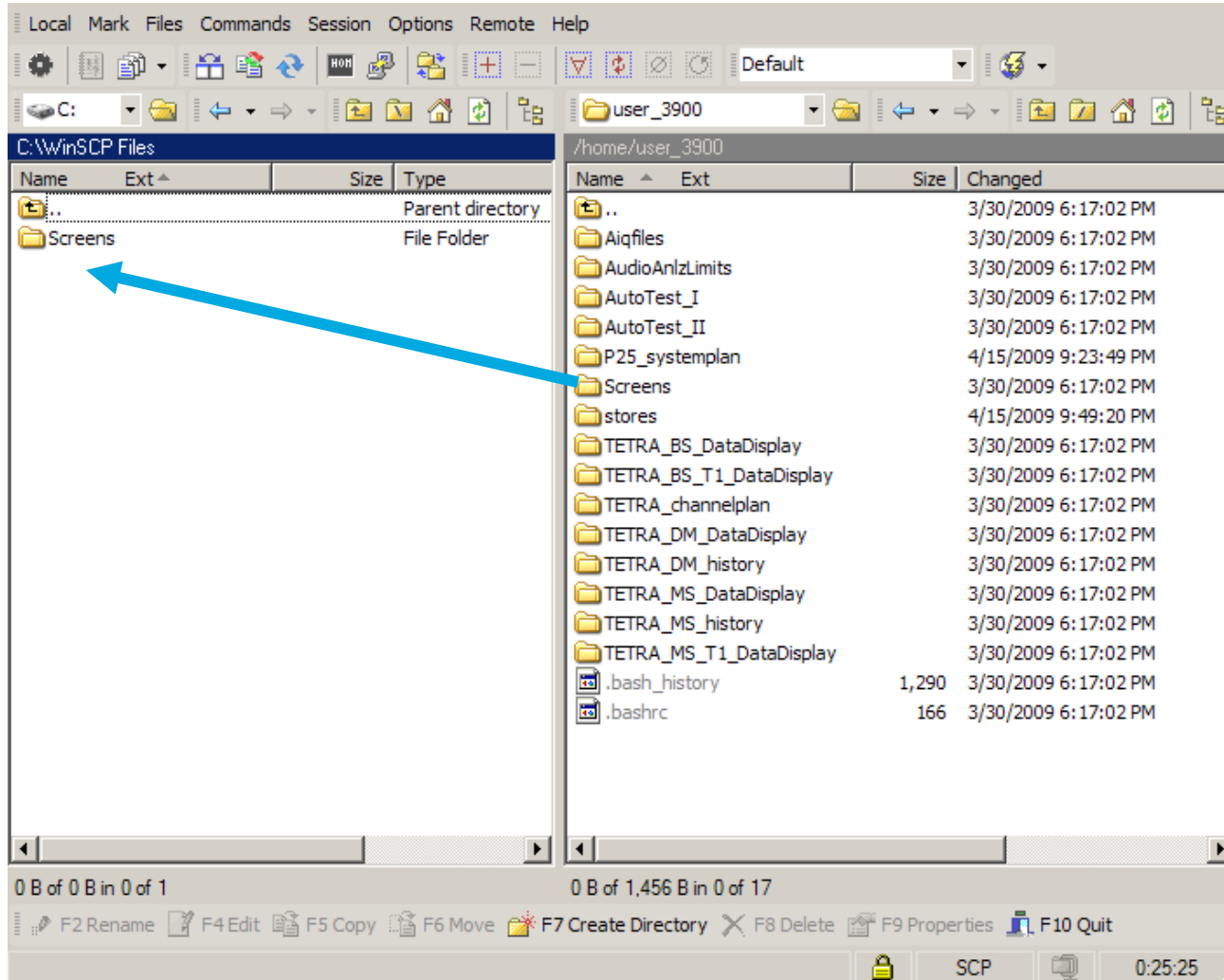
**System Log** – Segment fault and TCL error logs.

# Using WinSCP with the 3920B



To backup or copy files, simply drag and drop files or directories from one side to another.

# Using WinSCP with the 3920B



## Questions or Comments?

### Contact Information

---

For information about pricing for our products, contact the sales office by calling VIAVI Solutions at (800) 835-2352 or emailing [AvComm.Sales@viavisolutions.com](mailto:AvComm.Sales@viavisolutions.com).

For technical/product support, calibration, maintenance and general customer service inquiries, you can contact our help desk by [clicking here](#), calling (800) 835-2350, or emailing [Service.Americas@aeroflex.com](mailto:Service.Americas@aeroflex.com).

[Click here](#) for more information on the 3920B and latest software versions and training materials.

# The 3920B Radio Test Set

