



J-Reporter

PC Software for Certifier40G, Certifier10G

User Manual

Disclaimer

This manual is written for use with Viavi Solutions J-Reporter software. The manual, product, software, images, data and other files used are copyrighted, with all rights reserved to Viavi Solutions ('Viavi').

Viavi reserves the right to extend, remove or revise contents of this manual without prior notices and will not be responsible for the topicality, correctness, completeness or quality of the information provided. Viavi will not be liable for any losses or damages arise from installing or using this software.

For more information on Certifier or J-Reporter, please contact Viavi at customer.care@viavisolutions.com.

Minimum system requirements for J-Reporter:

Microsoft Windows® XP/7/8, 32-bit

Intel Core 2 Duo, 2Ghz

200MB of free disk space for installation

1GB of RAM

Microsoft .NET framework

Recommended system requirements:

Microsoft Windows® XP/7/8, 64-bit

Intel Core i3, 2.4Ghz and above

4GB of RAM

Contents

Chapter 1: Introduction	4
Running the Program	4
Upgrading from J-Reporter 6.x	5
Chapter 2: Project Management	6
File Management	6
Importing	8
Exporting the Test Results	13
Chapter 3: Data Management.....	16
Viewing the Test Results.....	16
Editing Information.....	22
Searching for Information.....	25
Chapter 4: Configuring an AUTOTEST	26
Personalising the Test Results.....	26
Choosing the Length Units.....	26
Choosing the Report Format.....	27
Chapter 5: Special Operations.....	29
Updating the Device Software	29
List-Based Testing - Hierarchy.....	31
List-Based Testing – Point to Point	32
Chapter 6: Localisations.....	34
Selecting the Language	34
Viewing the Device on your Workstation	35

Chapter 1: Introduction

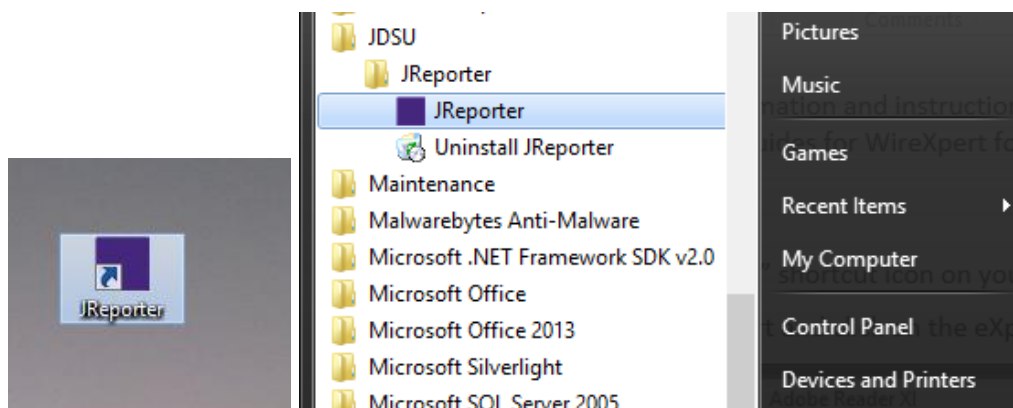
Please ensure Viavi Solutions J-Reporter has been installed into your workstation before you proceed further. Please refer to Installation Guide for detailed instructions on how to obtain and install J-Reporter.

J-Reporter is a software programmed to work seamlessly with Viavi Solutions's Certifier. It is designed to generate reports from test results obtained from Certifier units or the standard OTDR *.SOR file, and capable of exporting to the commonly used *.CSV and *.PDF format for data archiving. The software has undergone numerous qualitative and functional tests to ensure the latest version meets the latest industrial standards and trend requirements.

This manual will only contain information and instructions on how to use J-Reporter software. Please refer to User Manual and Guides for Certifier for device help.

Running the Program

1. Double click on the "J-Reporter" shortcut icon on your desktop or go to the Start Menu > JDSU > J-Reporter and click on the J-Reporter icon to start the program.



2. The program will start with the version/build number indicated.



Upgrading from J-Reporter 6.x

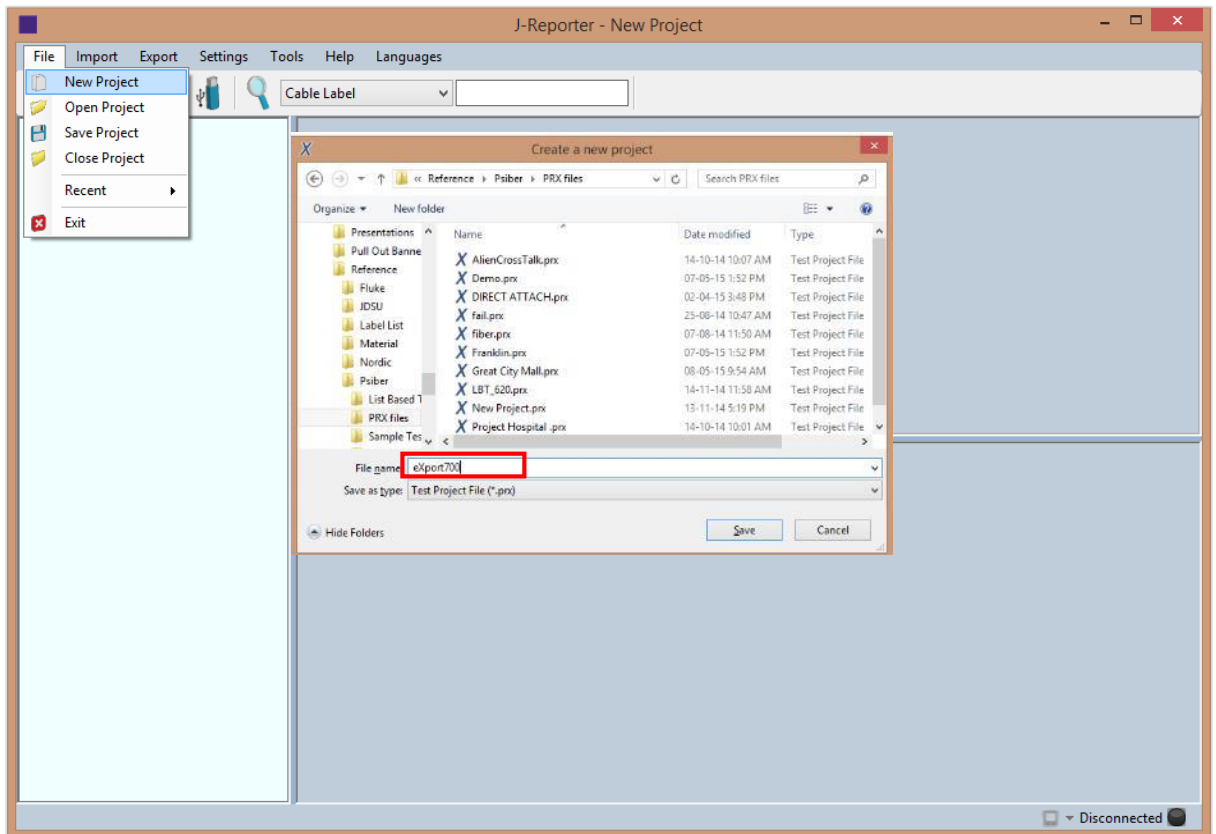
J-Reporter 7.x has upgraded its database structure and added new features such as the Re-certification function. You are recommended to perform a clean installation of the software by uninstalling the existing 6.x software before installing the 7.x version.

Chapter 2: Project Management

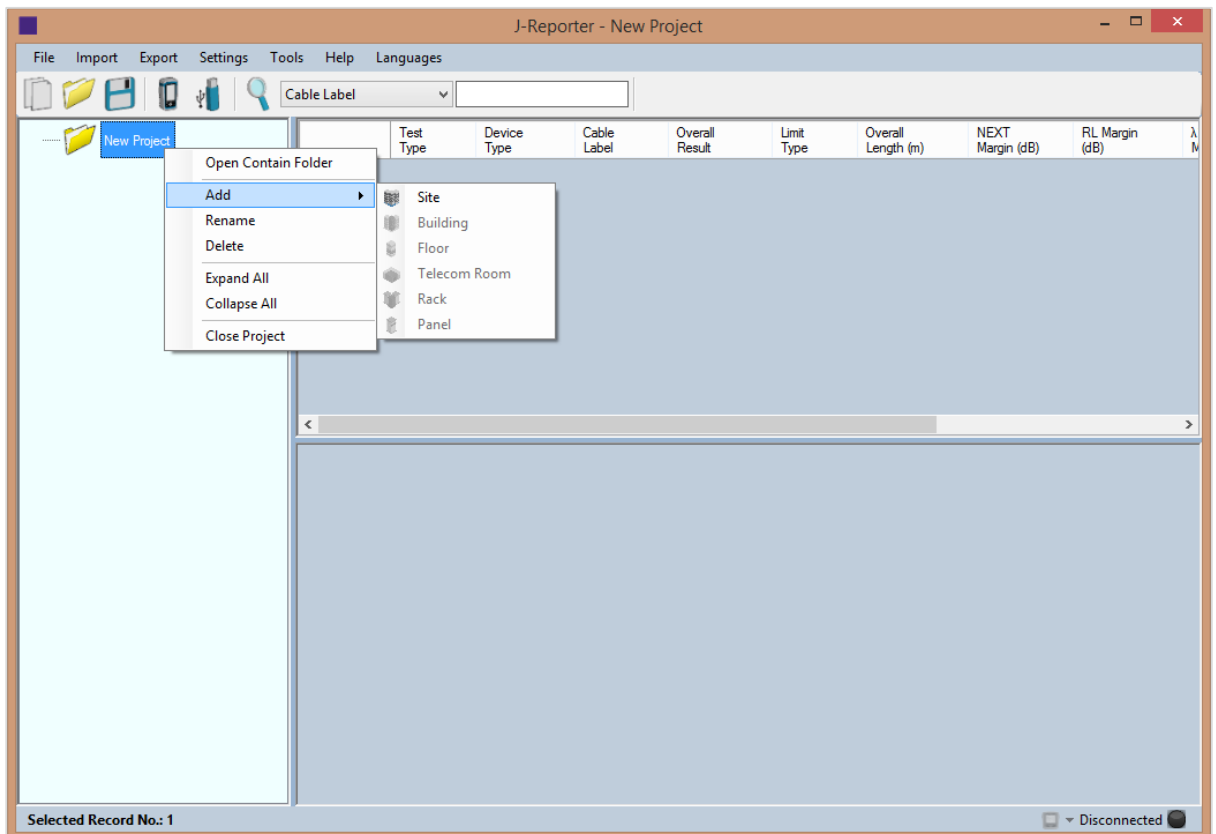
File Management

Creating a New Project

1. Go to File > New Project or click the  “New” icon to create a new project.




2. Right click on the new project that is created;



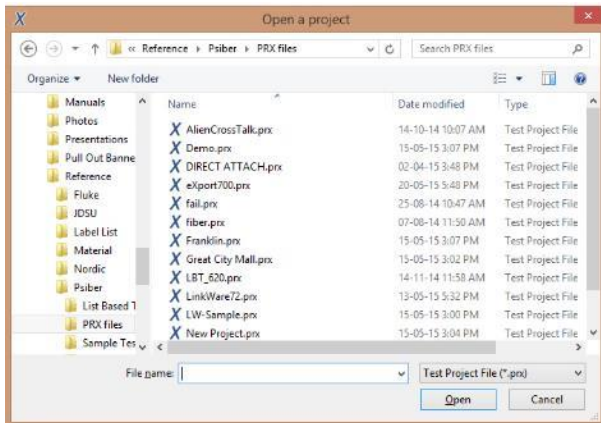
- Open Containing Folder – Opens file directory project file is saved in.
- Add (Sub-items to be added in hierarchal order)
 - Site – Adds a new site to the project.
 - Building - Adds a new building sub-item to the selected site.
 - Floor – Adds a new floor sub-item to the selected building.
 - Room – Adds a new room sub-item to the selected floor.
 - Rack – Adds a new rack sub-item to the selected room.
 - Panel – Adds a new panel sub-item to the selected rack.
- Rename – Renames the selected item.
- Delete – Deletes the selected item.
- Expand All / Collapse All – Expands or collapses the items and sub-items in the project.

Close Project – Closes the selected project

Opening an Existing Project

1. Go to File > Open or click the  “Open” icon to open an existing project.

Locate your project (*.prx) file and click 'Open' to proceed.



Importing

Test Results from Device

1. Please ensure Certifier is connected to your workstation via an USB cable.




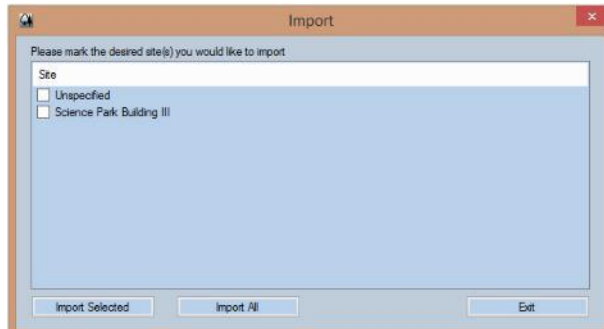
2. You may be prompted to install Microsoft Windows Mobile Device Center. Click 'Accept' to proceed installing the necessary drivers.



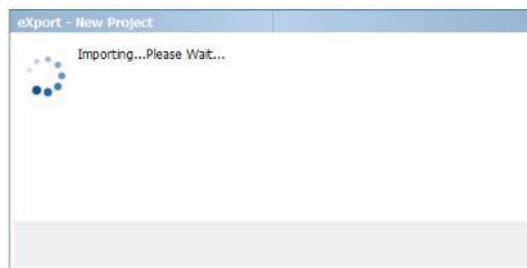
- Status bar will indicate “Connected” once your workstation is linked to the Device.



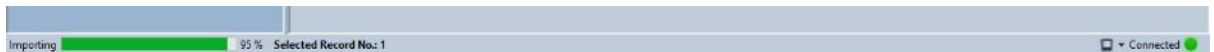
- Go to Import > Device or click the  “Device” icon.
- Select the Test Results you wish to import and click ‘Import Selected’ to proceed. Click ‘Import All’ to import all test results.




- Depending on number of saved results, J-Reporter may take longer to import.

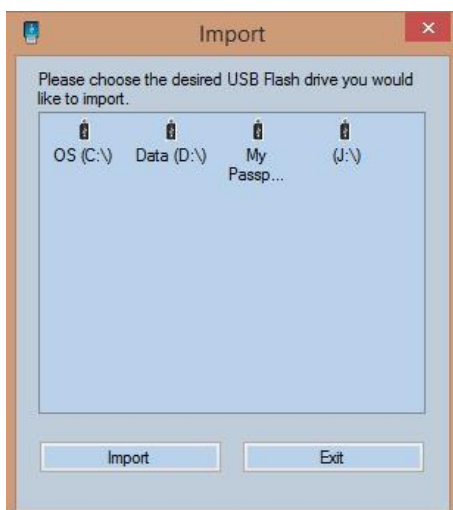


- Status bar will indicate “Importing” during the import.

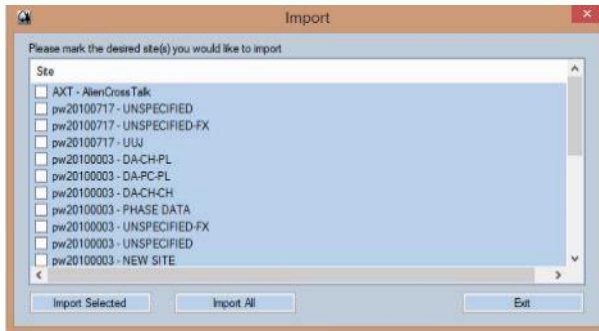


Test Results from USB Flash Drive

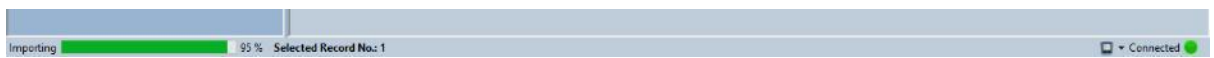
- Go to Import > Device or click the  “USB Flash Drive” icon.
- Select the Drive you wish to import the Test Result from. Click “Import” to proceed.



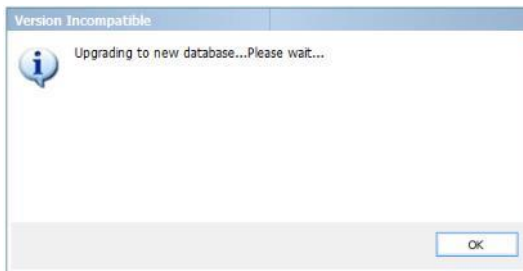
3. Select the desired site(s) to import and click “Import Selected” or click “Import all” to import all sites.



4. Status bar will indicate “Transferring” during the import.

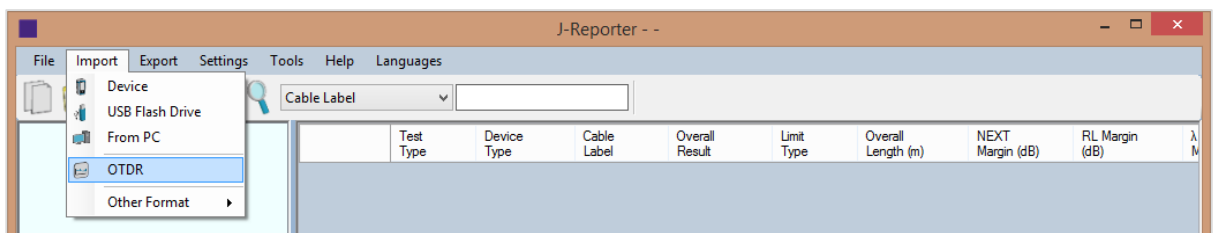


5. J-Reporter will automatically upgrade the database if test results are imported from a previous build.



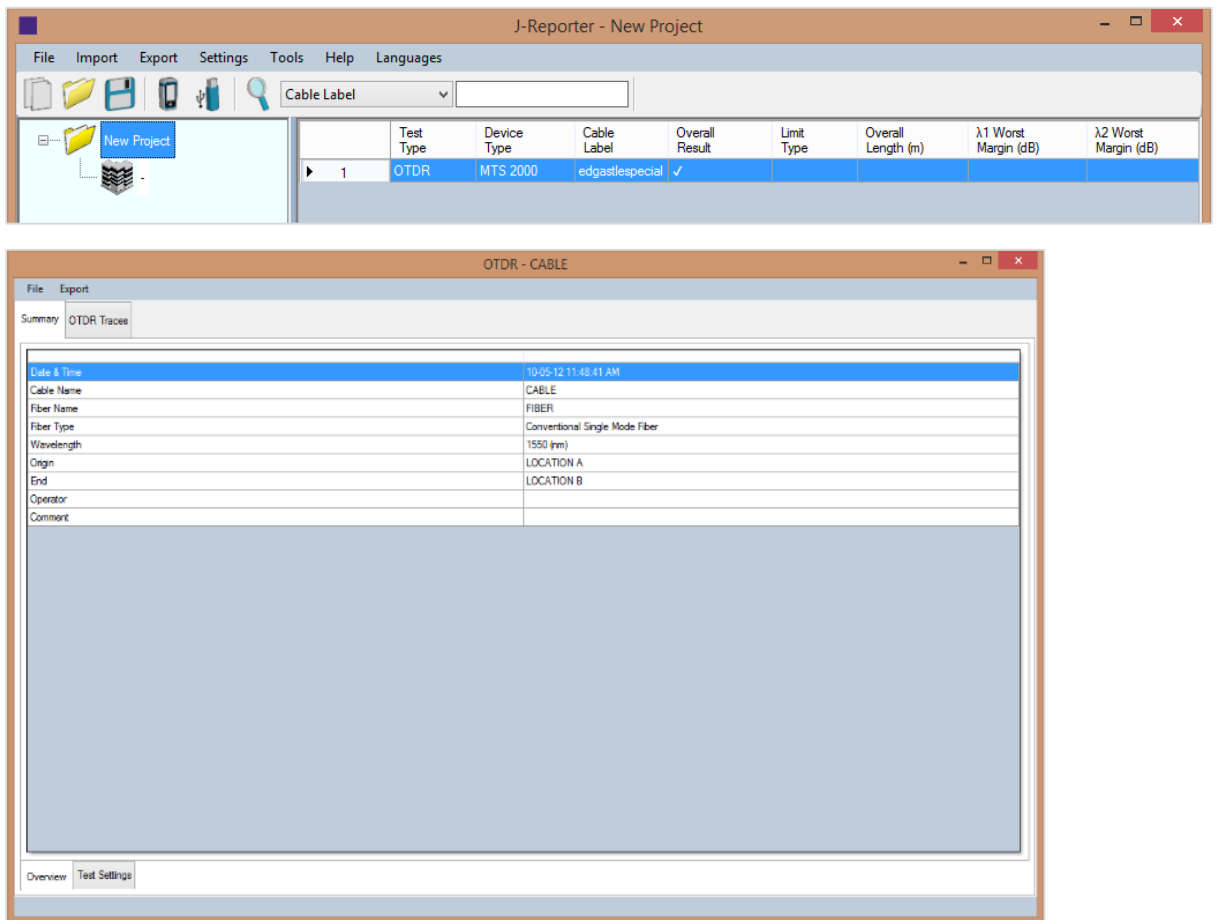
OTDR Test Results from SOR files

1. Go to Import > OTDR to import *.SOR files.

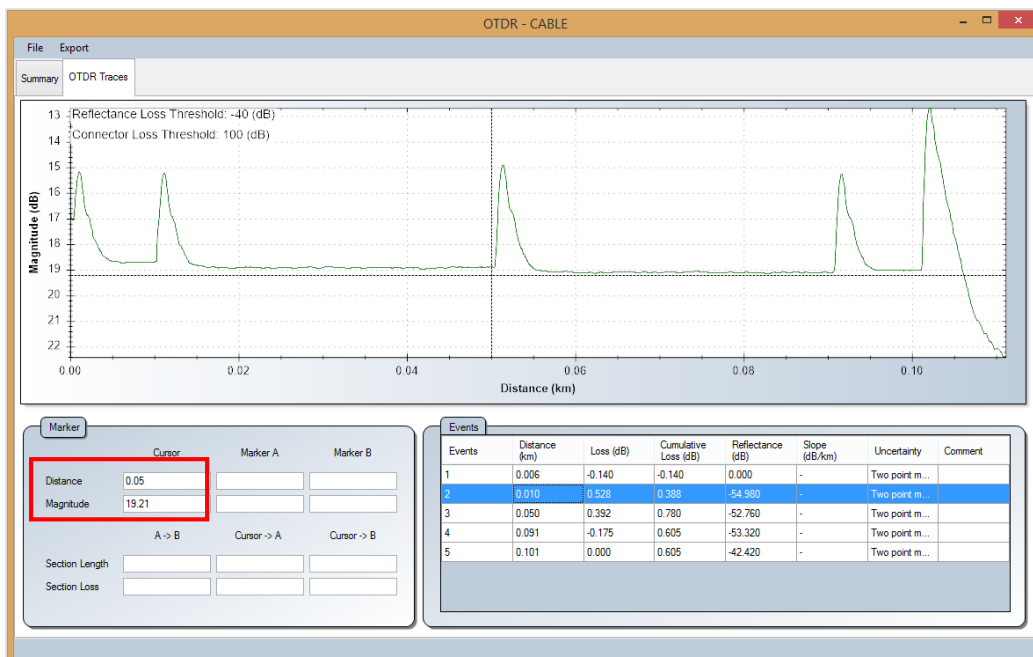


2. Locate the *.SOR file and click “Open” to begin import.

3. Double click the test result to view the detail test results.

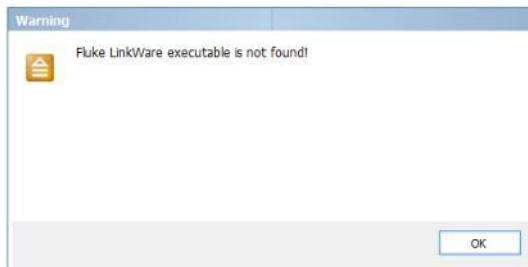


4. Move mouse cursor over chart in detailed view “OTDR Traces” to view distance over magnitude results.

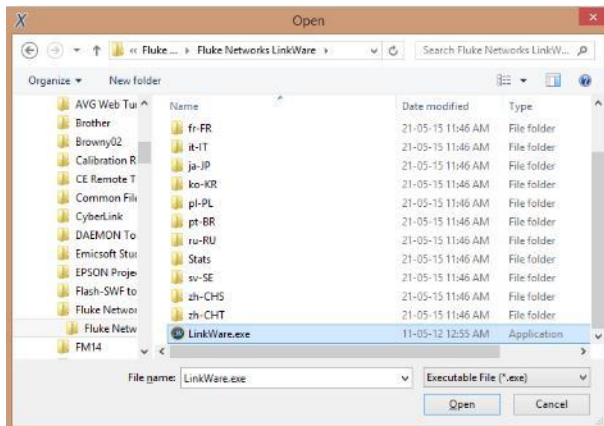


Fluke Linkware Test Results from FLW files

Please ensure Linkware v7.2 and above is installed in workstation before importing data.



1. Go to Import > Other Format > Fluke Linkware to import *.FLW files.
2. J-Reporter will attempt to detect Linkware application if the software has been installed in the default directory. Otherwise, locate the folder where the software is installed, select "Linkware.exe" and click Open.



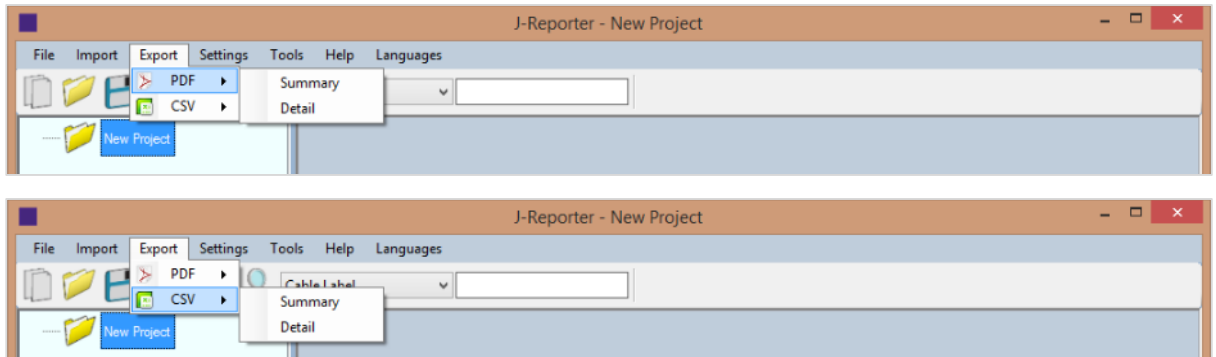
3. Locate the *.FLW file and click "Open" to begin import.
4. Double click the test result to view the detail test results.

	Test Type	Device Type	Cable Label	Overall Result	Limit Type	Overall Length (m)	NEXT Margin (dB)	RL Margin (dB)	X1 Worst Margin (dB)
1	Fluke	LinkWare	D1-03	✓	TIA Cat 6 Perm. Link	29	3.1	5.6	0
2	Fluke	LinkWare	D1-01	✓	TIA Cat 6 Perm. Link	57	1.4	4.3	0
3	Fluke	LinkWare	WWWWWWWWTTTTT000000000000	✓	TIA Cat 5e BL (1999)	60.4	11.1	5.7	0
4	Fluke	LinkWare	A1-02	✓	TIA Cat 5e BL (1999)	32.3	11.2	7.5	0
5	Fluke	LinkWare	RM1-A	✓	Cat 5E Chan	35.4	7.2	4.	0
6	Fluke	LinkWare	RM2-A	✓	Cat 5E Chan	65.5	5.4	2.4	0
7	Fluke	LinkWare	PORT-001	✓	Cat 5E P-Link	24.4	10.3	3.2	0
8	Fluke	LinkWare	PORT-002	✓	Cat 5E P-Link	30.2	16.4	7.8	0

Exporting the Test Results

1. Go to Export > PDF to export selected test report in *.PDF format.

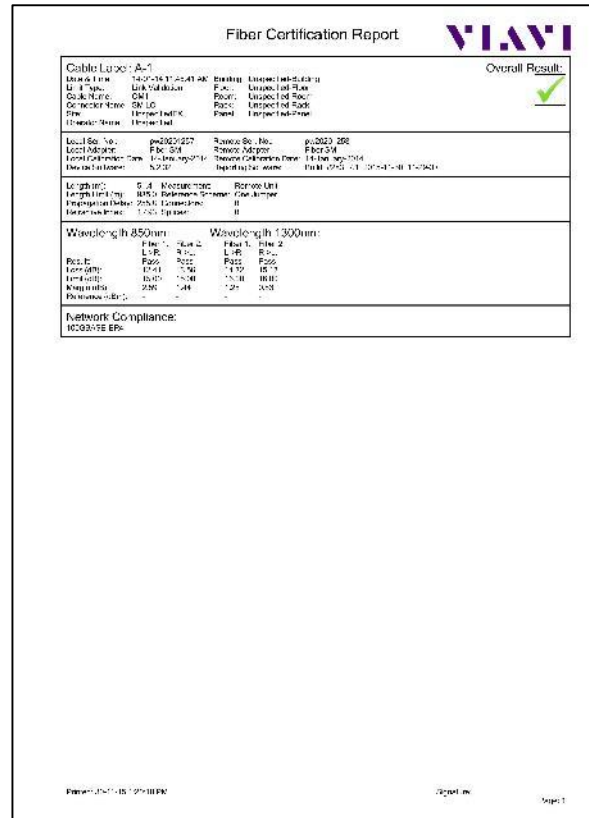
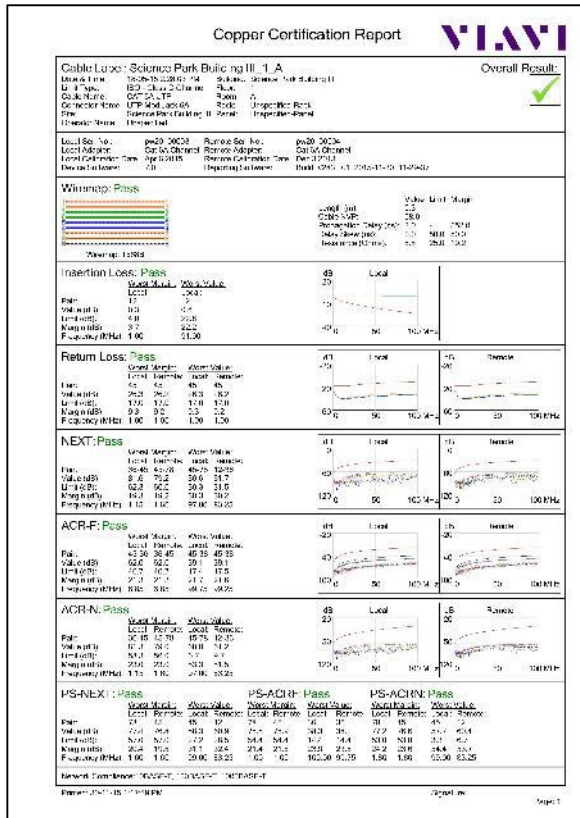
Go to Export > CSV to export selected test report in *.CSV format.



- Summary – Generates summarized result(s) listing only the basic information. Generally used to tabulate report for entire project.

Summary Report					
Cable Label	Result	Length (m)	NEXT Margin (dB)	Limit	Date & Time
blk-flr0-tel1-rok2-pnl-2-poi		84	3.4	TIA - Cat 6A Channel	17-07-14 11:55:09 AM
Total for Selected Reports		Pass	Fail	Length (m)	
Copper		1	0	84	

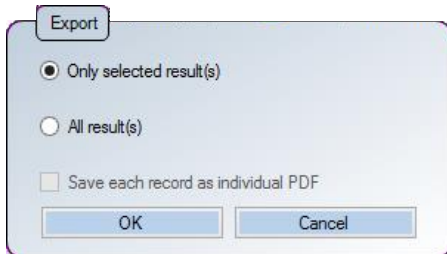
- Detail – Generates full testing result consisting of all tested parameters, plots, test settings and device information of individual point.



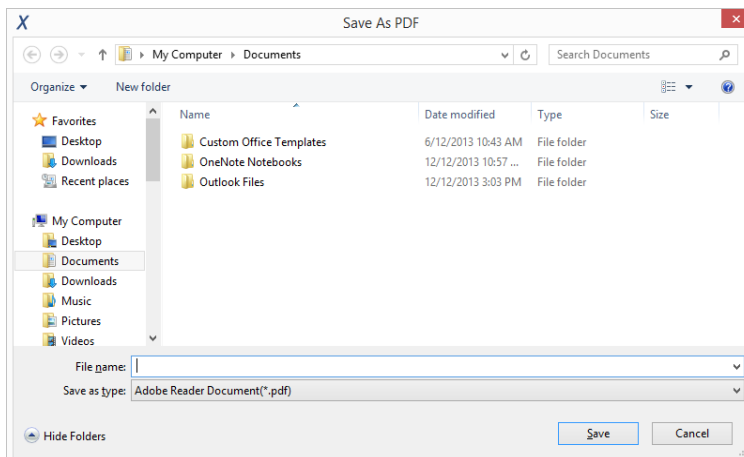
Typical Copper Certification Report (Detail)

Typical Fiber Certification Report (Detail)

2. Select "Only selected result(s)" for desired results or "All result(s)" for all results that has been loaded. Click 'OK' to proceed.



3. Choose directory to save PDF or CSV file, enter file name and click 'Save' to proceed.



Note: When Saving Phase Data option is enabled in the Lab Options, exported CSV file can be used to generate plots for phase information.

Chapter 3: Data Management

Viewing the Test Results

1. After importing test results, summarised data will be displayed.

Click on the Project name to display all test results.

Click on the Site name to display test results saved within the site.

The screenshot displays the J-Reporter software interface for a project named 'Great City Mall'. The interface includes a menu bar (File, Import, Export, Settings, Tools, Help, Languages), a toolbar with icons for file operations and a search bar, and a main workspace. On the left, a tree view shows the project structure with folders for 'UNSPECIFIED', 'BL', and 'A'. The main workspace is divided into a table of test results and a summary panel.

	Test Type	Device Type	Cable Label	Overall Result	Limit Type	Overall Length (m)	NEXT Margin (dB)
1	Copper	Wx4500	blk-flr0-tel1-rck1-pnl-0-por1	✓	TIA - Cat 6A Channel	84	3.2
2	Copper	Wx4500	blk-flr0-tel1-rck1-pnl-2-por1	✓	TIA - Cat 6A Channel	4	3.5
3	Copper	Wx4500	blk-flr0-tel1-rck2-pnl-0-por1	✗	TIA - Cat 6A Channel	4	3.5
4	Copper	Wx4500	blk-flr0-tel1-rck2-pnl-2-por1	✓	TIA - Cat 6A Channel	84	3.4
5	Copper	Wx4500	PRBL#A.A.X.Z.A	✓	TIA - Cat 6A Channel	1.9	13.4
6	Copper	Wx4500	PRBL#A.A.Y.Z.A	✓	TIA - Cat 6A Channel	1.9	14.7
7	Copper	Wx4500	PRBL#A.A.Z.Z.A	✓	TIA - Cat 6A Channel	2	12.4
8	Copper	Wx4500	A-2	✓	TIA - Cat 6A Channel	2	15.7
9	Copper	Wx4500	A-1	✓	TIA - Cat 6A Channel	2	14.6
10	Copper	Wx4500	A-3	✓	TIA - Cat 6A Channel	2	11.8
11	Copper	Wx4500	None	✓	TIA - Cat 6A Channel	2	14.0

The summary panel below the table provides detailed information for the selected record (blk-flr0-tel1-rck1-pnl-0-por1):

Summary		Overall Result	
Local Ser. No.	pw20100003	Measurement	Value/Margin
Remote Ser. No.		Length (m)	84
Cable Manufacturer	Generic UTP	Delay (ns)	428.0
Cable Name	CAT 6A UTP	Cable NVP (%)	68
Cable Type	UTP	Resistance (Ohms)	15.1
Connector Manufacturer	Un-Shielded Connector	Insertion Loss (dB)	37.4
Connector Name	UTP Mod Jack 6A	Return Loss (dB)	7.9
Connector Type	UnShielded	NEXT (dB)	3.2
Limit	TIA - Cat 6A Channel	PS-NEXT (dB)	5.7
blk-flr0-tel1-rck1-pnl-0-por1		ACR-F (dB)	15.2
		PS-ACRF (dB)	16.5

Total Records: 14 Selected Record No.: 1

Legend

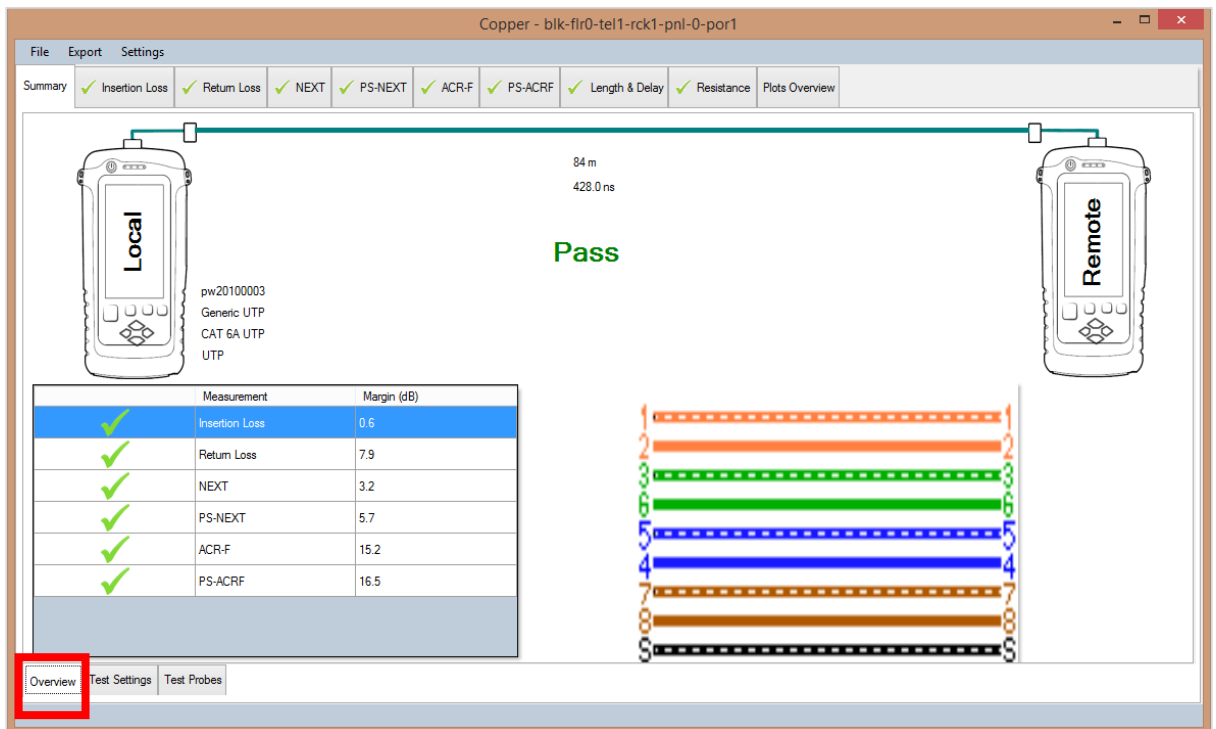
✓ Pass

✓* Marginal Pass

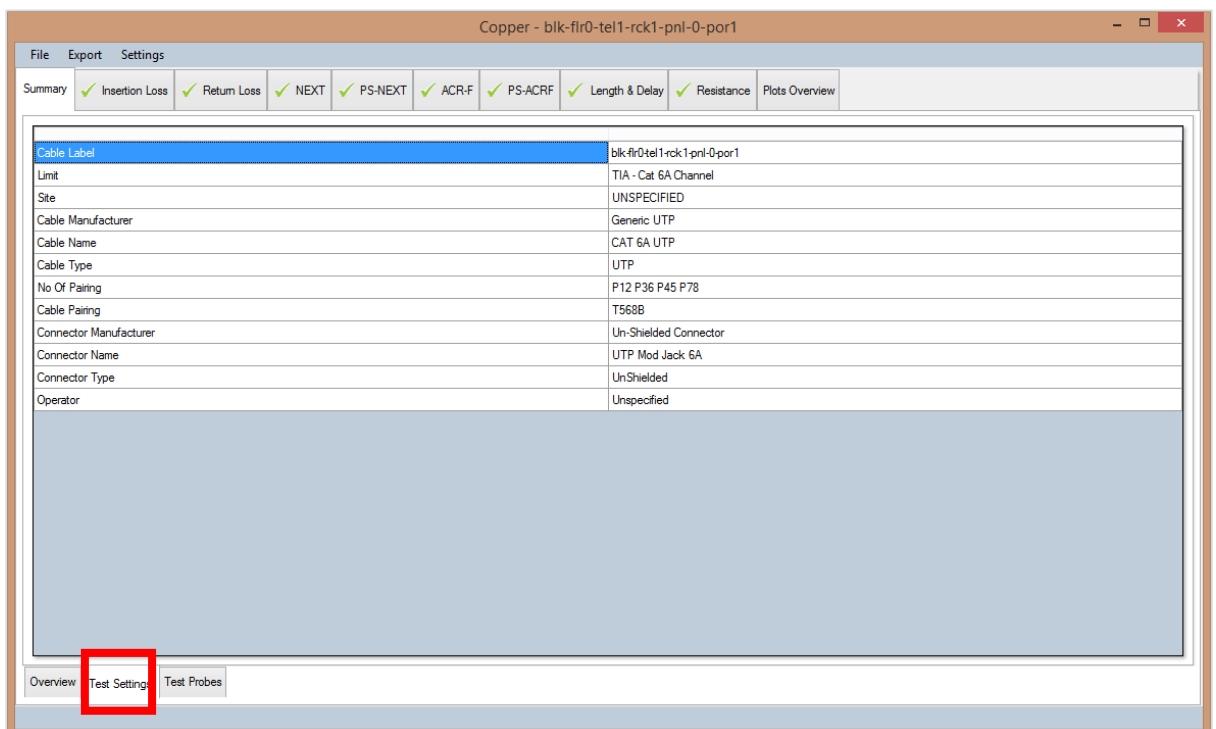
✗ Fail

✗* Marginal Fail

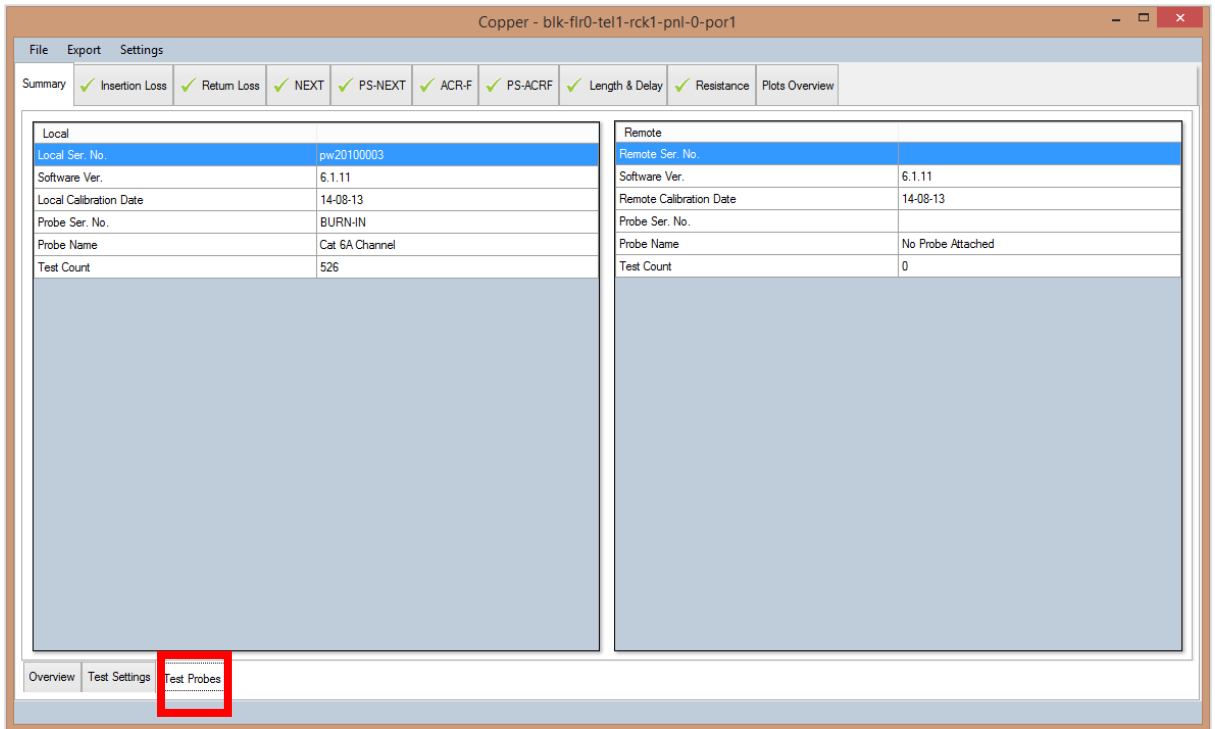
2. Double click view more comprehensive information of the test result.



The 'Overview' tab displays the summary of the selected results.

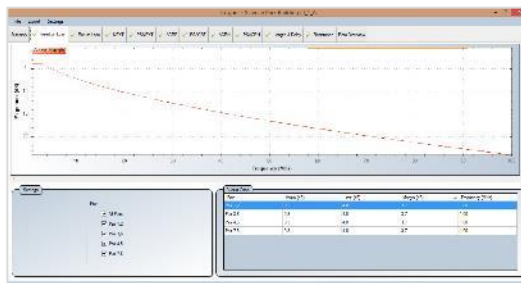


The 'Test Settings' tab displays the configurations used for the selected results.

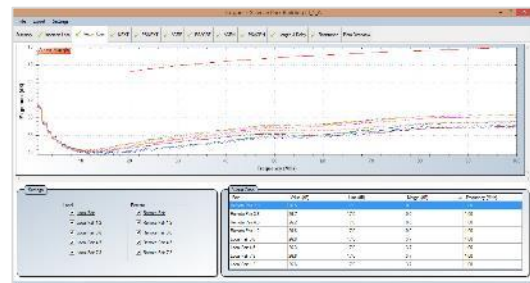


The 'Test Probe' tab displays information on the hardware used to obtain the results.

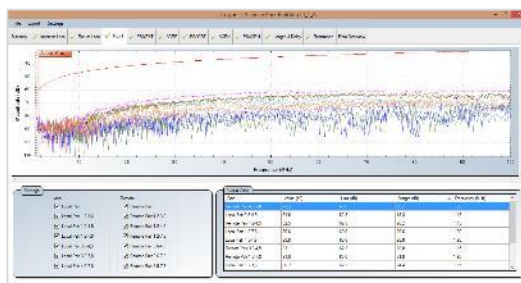
3. Click on the individual tab to display plots, worst marker and other detailed information. Use the scroll wheel of the mouse on the plots to zoom in/out the results, and right click for more in-plot options.



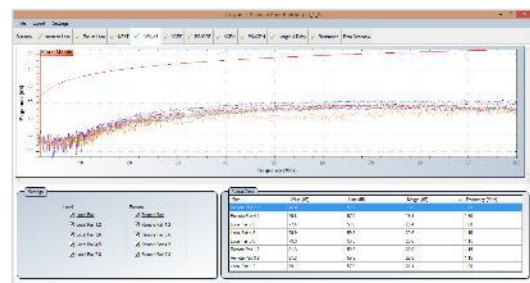
Insertion Loss



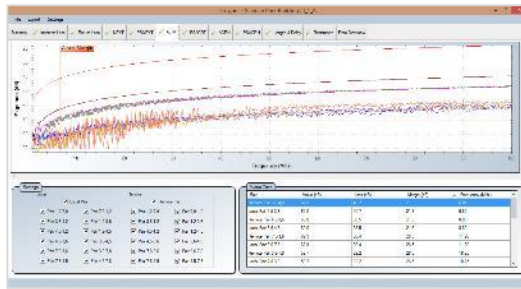
Return Loss



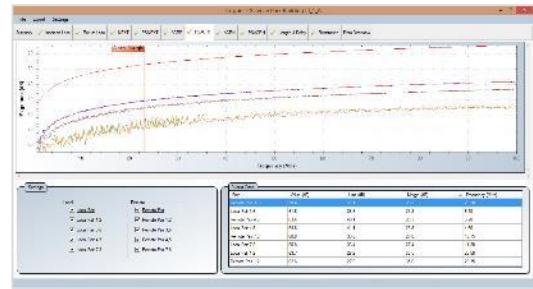
NEXT



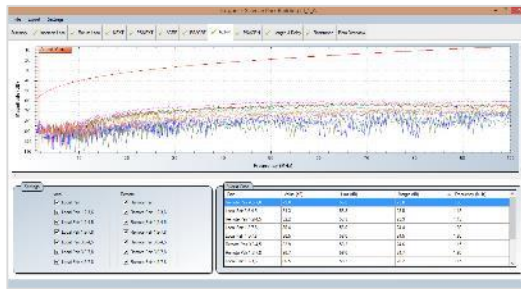
PSNEXT



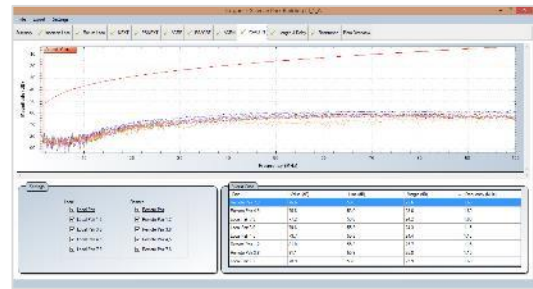
ACRF



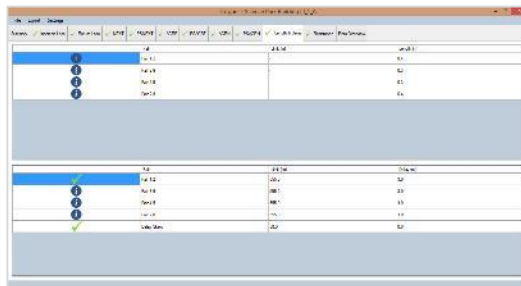
PSACRF



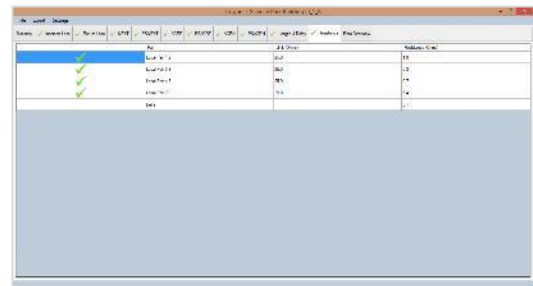
ACRN (ISO only)



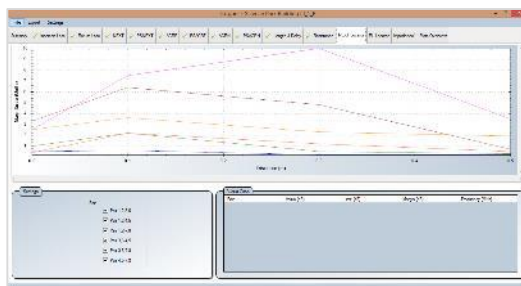
PSACRN (ISO only)



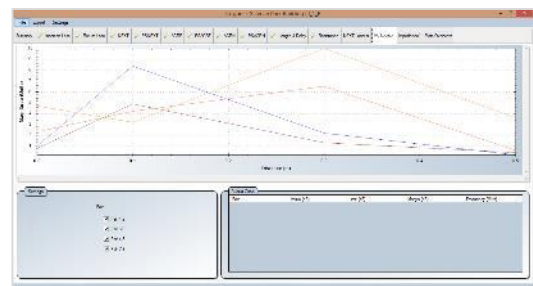
Length & Delay



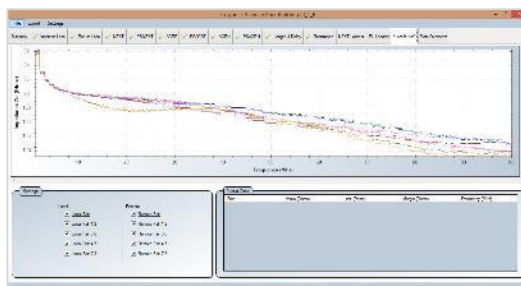
Resistance



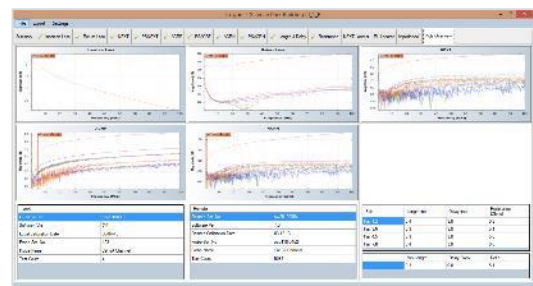
NEXT Locator



RL Locator



Impedance



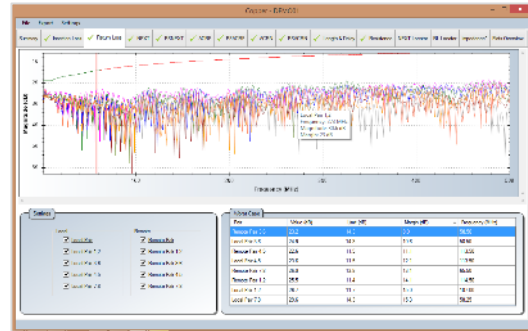
Plots Overview

Inverting Y Axis

1. Go to Settings > Y Axis (Vertical) Orientation > Inverted



Default chart

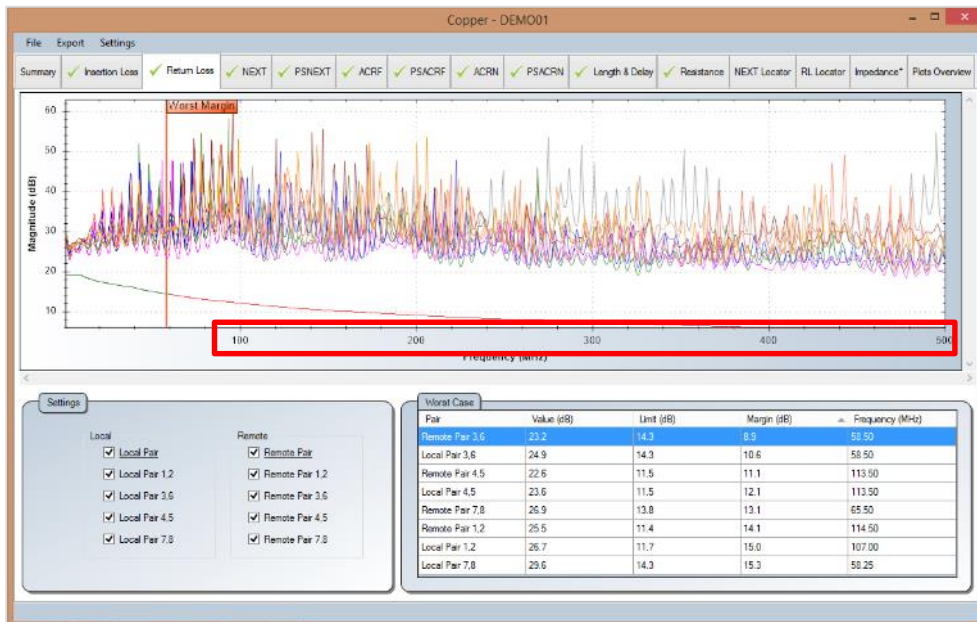


Inverted Chart

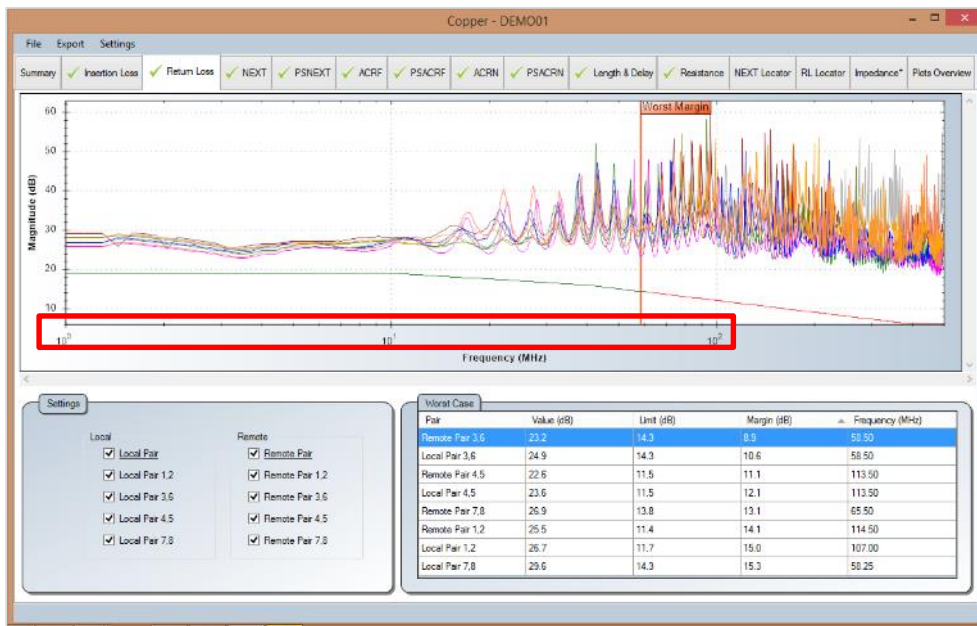
Linear & Logarithmic

1. Go to Settings > X Axis (Horizontal) Orientation

> Linear – default



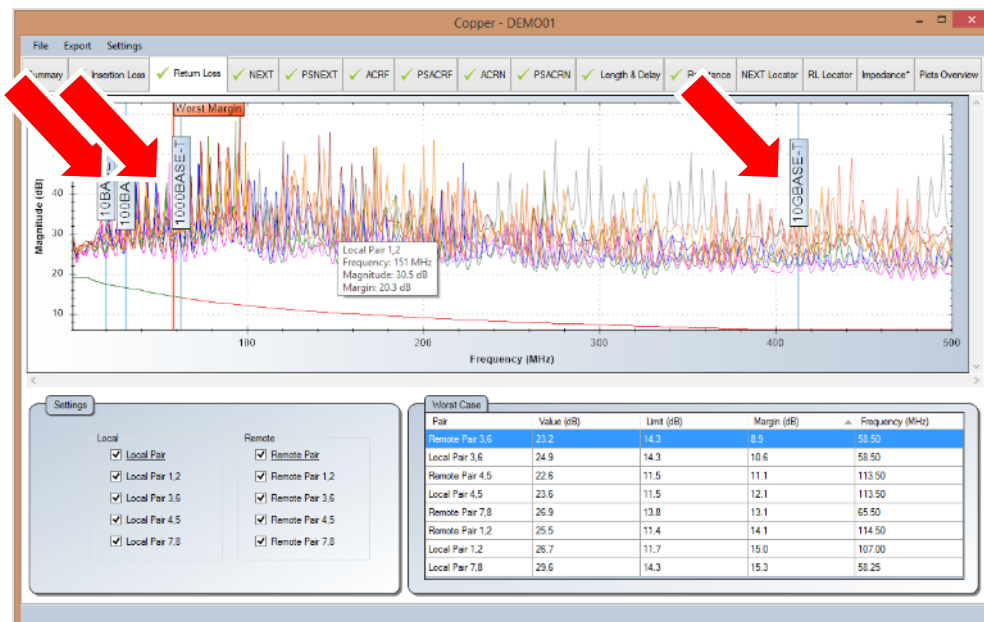
> Logarithmic



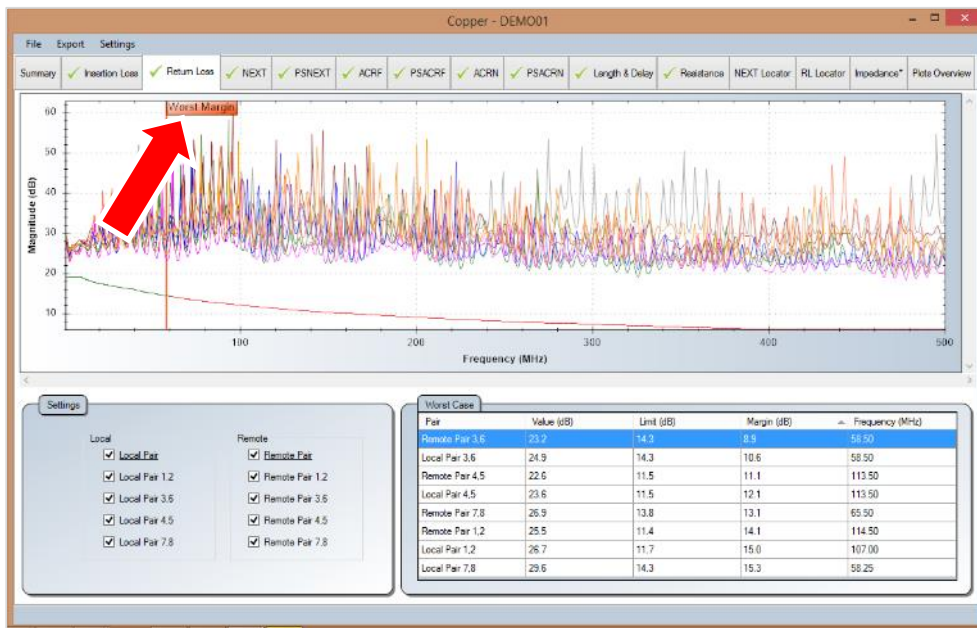
Markers

1. Go to Settings > Markers

> Ethernet Standards – additional markers indicating frequencies of various Ethernet standards will be indicated for reference.



> Worst Markers – default



Editing Information

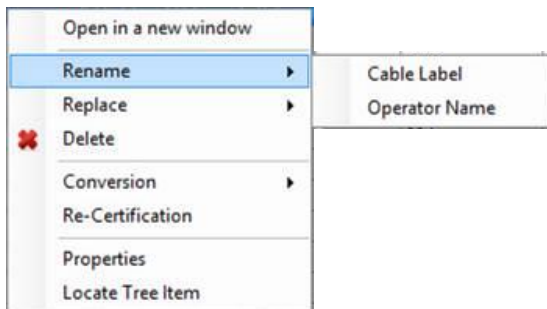
1. Right click at the results selection screen (right panel).

The screenshot shows the 'J-Reporter - Great City Mall' software interface. On the left is a tree view of the network topology. The main panel displays a table of test results:

Test Type	Limit Type	Overall Length (m)	NEXT Margin (dB)
1 Copper	TIA - Cat 6A Channel	84	3.2
2 Copper	TIA - Cat 6A Channel	4	3.5
3 Copper			3.4
4 Copper			13.4
5 Copper			14.7
6 Copper			12.4
7 Copper			15.7
8 Copper			14.6
9 Copper			11.8
10 Copper			14.0
11 Copper			

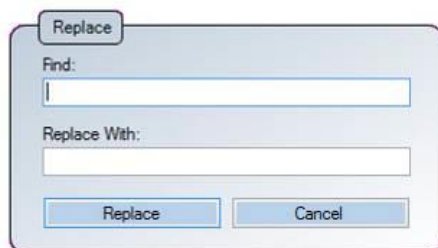
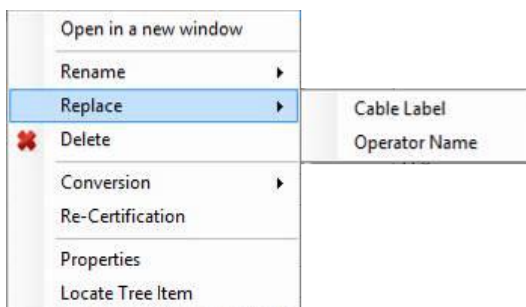
Below the table is a 'Summary' panel with fields for Local Ser. No., Remote Ser. No., Cable Manufacturer, Cable Name, Cable Type, Connector Manufacturer, Connector Name, Connector Type, Limit, and a unique identifier: blk-flr0-tel1-rck1-pnl-0-por1. To the right is an 'Overall Result' panel with fields for Measurement, Value/Margin, Length (m), Delay (ns), Cable NVP (%), Resistance (Ohms), Insertion Loss (dB), Return Loss (dB), NEXT (dB), PS-NEXT (dB), ACR-F (dB), and PS-ACRF (dB). A context menu is open over the table, showing options: Open in a new window, Rename, Replace, Delete, Conversion, Re-Certification, Properties, and Locate Tree Item.

2. Go to Rename > Cable Label to rename the selected cable.
Go to Rename > Operator Name to rename the selected operator.

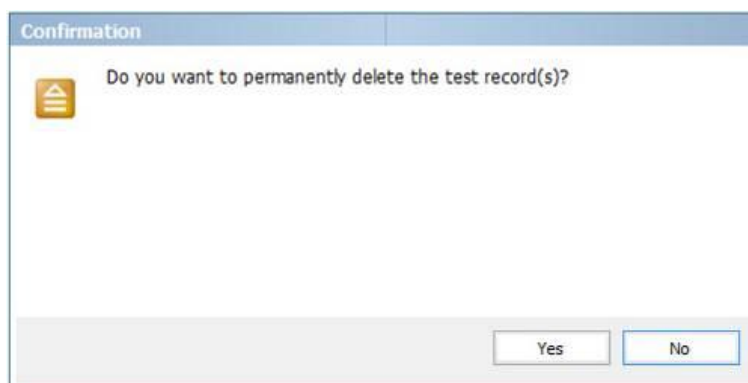


Go to Replace > Cable Label to find the label to be replaced on the selected result(s).

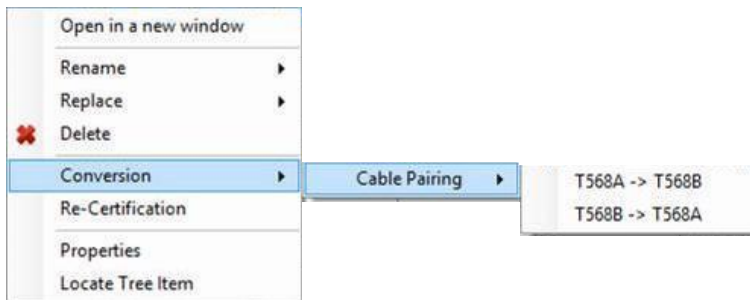
Go to Replace > Operator Name to find the name to be replaced on the selected result(s).



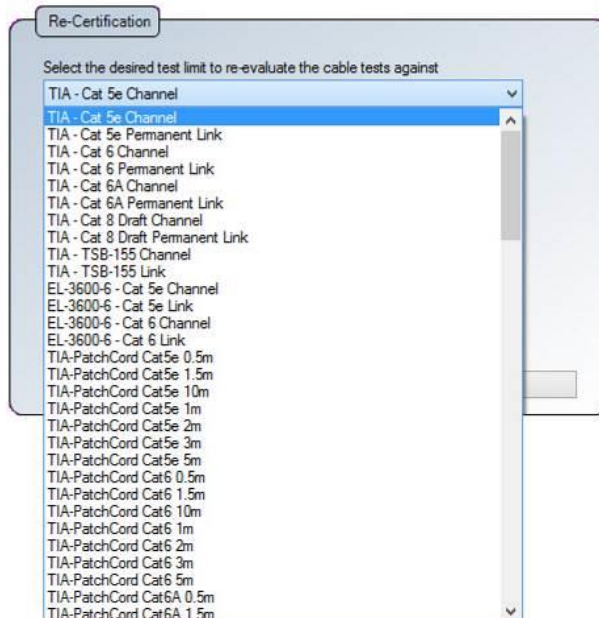
3. Go to Delete to permanently delete a test result. Click 'Yes' to proceed.



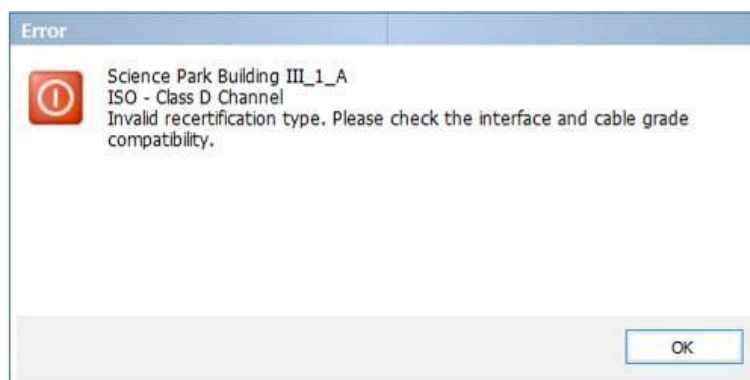
- Go to Conversion > Cable Pairing to change between T568A to T568B cable pairing and T568B to T568A pairing. Default setting uses T568B cable pairing.



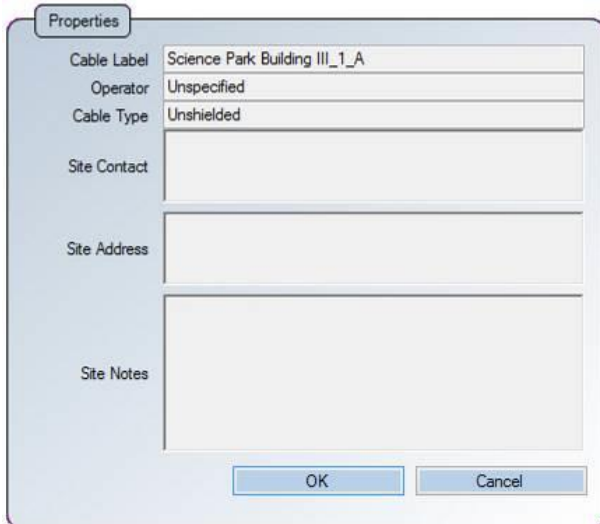
- Go to Re-Certification to recertify the selected test result using another test limit.
Note: Backup *.PRX file before performing Re-certification as this process will overwrite existing test results.



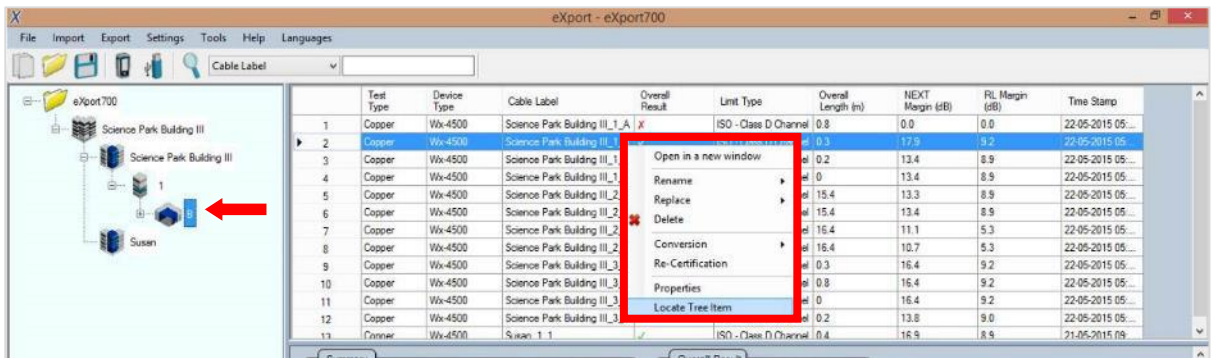
Re-certification will fail if test condition is not met.



- Go to Properties to view user editable information on the selected result.




7. Go to Locate Tree Item to find where the selected cable label is located within the project hierarchy tree.



Searching for Information

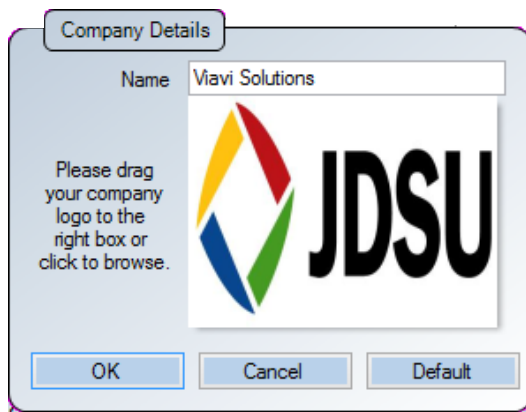


1. Select type of search from the drop-down menu and input search value in the search field or select from the additional search options.
2. Press 'Enter' or click the 'Search'  icon on the left to begin search.

Chapter 4: Configuring an AUTOTEST

Personalising the Test Results

1. Go to Settings > Company Details to personalise test results with your corporate logo and company name.
2. Enter Company name and click on the empty space to browse for image of the logo.
Click 'OK' to save.




3. Your Company name and corporate logo will be displayed on the top left hand corner of the next result exported.




Choosing the Length Units

1. Go to Settings > Length Unit to choose length units to be displayed in Metres or Feet on the test results.

Overall Result	
Measurement	Value/Margin
Length (m)	0.3
Delay (ns)	3.0
Cable NVP (%)	68
Resistance (Ohms)	5.1
Insertion Loss (dB)	0.6
Return Loss (dB)	9.2
NEXT (dB)	17.9
PSNEXT (dB)	79.6
ACRF (dB)	20.7
PSACRF (dB)	99.0
ACRN (dB)	21.6
PSACRN (dB)	83.3




Overall Result	
Measurement	Value/Margin
Length (ft)	0.7
Delay (ns)	3.0
Cable NVP (%)	68
Resistance (Ohms)	5.2
Insertion Loss (dB)	0.6
Return Loss (dB)	8.9
NEXT (dB)	13.4
PSNEXT (dB)	12.4
ACRF (dB)	21.9
PSACRF (dB)	23.0
ACRN (dB)	17.1
PSACRN (dB)	16.1

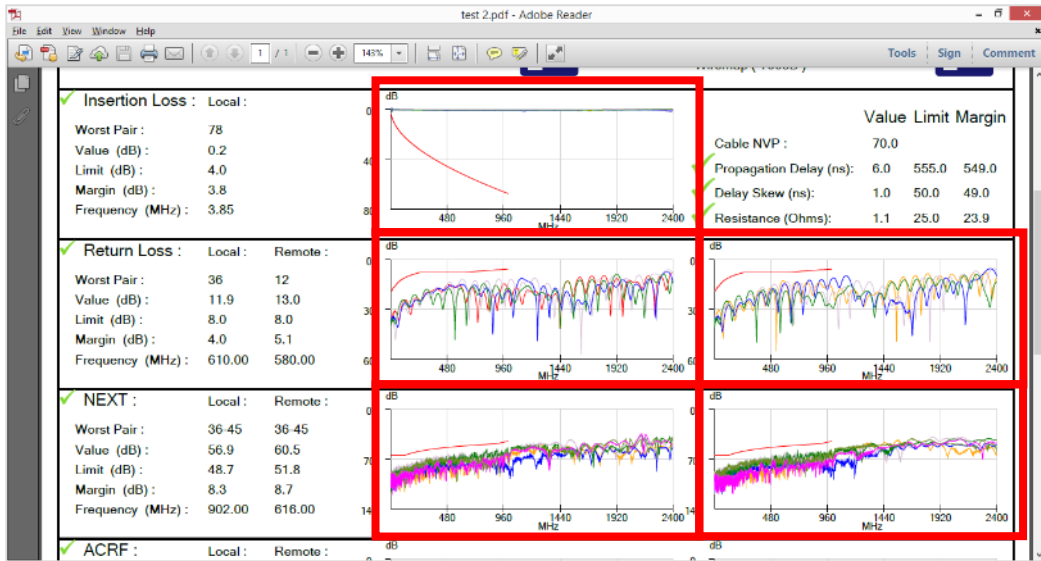


Choosing the Report Format

- Go to Settings > Report Format to choose the format of the report.
 - > Calibration Date (default) – last calibration date of Certifier will be indicated on the report

Copper Certification Report		VIAVI	
Cable Label: Science Park Building III_1_A			Overall Result: 
Date & Time: 18-05-15 2:28:03 PM	Building: Science Park Building III		
Limit Type: ISO - Class D Channel	Floor: 1		
Cable Name: CAT 6A UTP	Room: A		
Connector Name: UTP Mod Jack 6A	Rack: Unspecified-Rack		
Site: Science Park Building III	Panel: Unspecified-Panel		
Operator Name: Unspecified			
Local Ser. No.: pw20100003	Remote Ser. No.: pw20100004		
Local Calibration Date: Apr 6 2015	Remote Calibration Date: Dec 3 2013		
Device Software: 7.0	Reporting Software: Data_Export_7.1_2015-11-30_11-29-57		

- > Y-axis Inverted – all test results will generate charts with inverted Y-axis

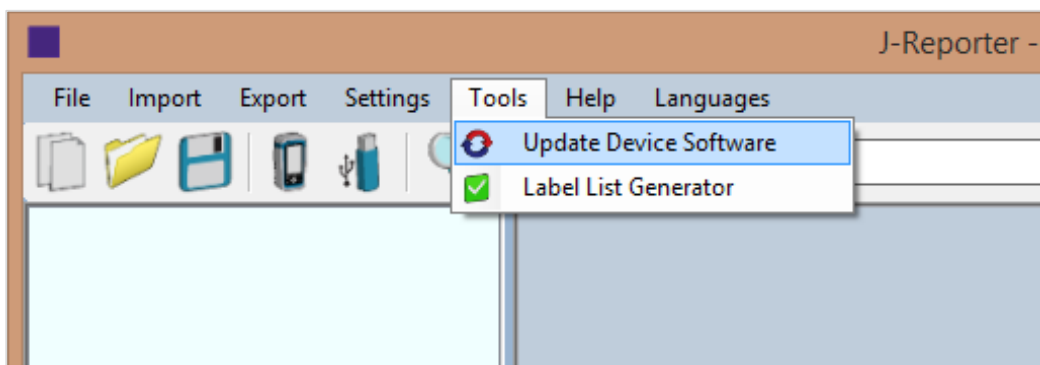


> Plots – selecting High Resolution will generate PDF report in the highest printable quality or Low Resolution for PDF reports in compressed file size.

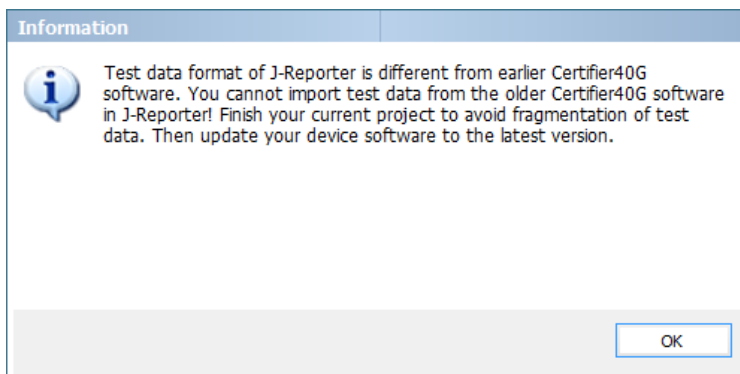
Chapter 5: Special Operations

Updating the Device Software

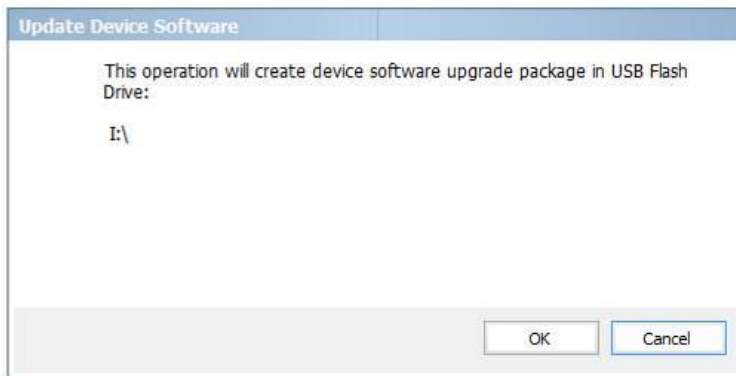
1. Go to Tools > Update Device Software



2. Please ensure an USB flash drive has been connected to your workstation before proceeding with update.
3. Click 'OK' after reading the warning message to proceed.



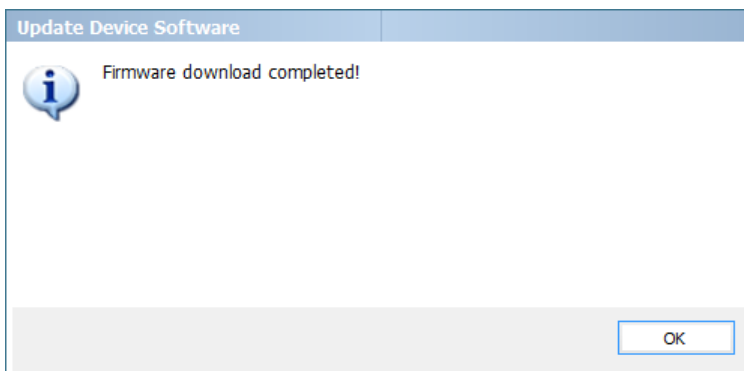
4. Select USB flash drive for firmware to be exported to and click 'Export' to proceed.



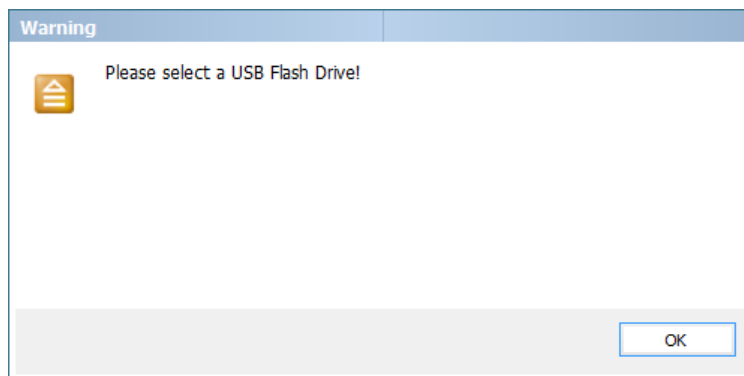
5. Status bar will indicate the "Processing" status during the upgrade.



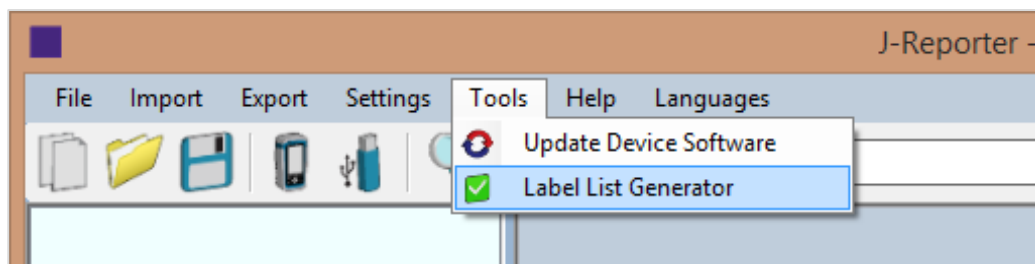
6. You will be informed when the upgrade is complete. Click 'OK' to proceed.



7. In the event the USB flash disk is not present, you will be reminded to insert one.



List-Based Testing - Hierarchy



Go to Tools > Label List Generator

The Label List Generator generates cable labels in customisable hierarchical (building name-> floor-> telecom room-> rack-> panel-> port) order before conducting cable certifications, reducing effort from keying labels after every test. The pre-defined labels imported into the device will prevent duplicate testing when conducting in non-sequential orders.

Label Tiers provides hierarchical tiering of the labels. Uncheck tier if not applicable.

“Delimited with” is the text separator between each tier of labeling. Leave blank if not applicable. Alpha-numeric and ASCII characters can be used.

“Start with” is the first label of the tier. Only alpha-numeric characters can be used.

“End with” is the last label of the tier. J-Reporter will increase the number of labels depending on the input. Only alpha-numeric characters can be used.

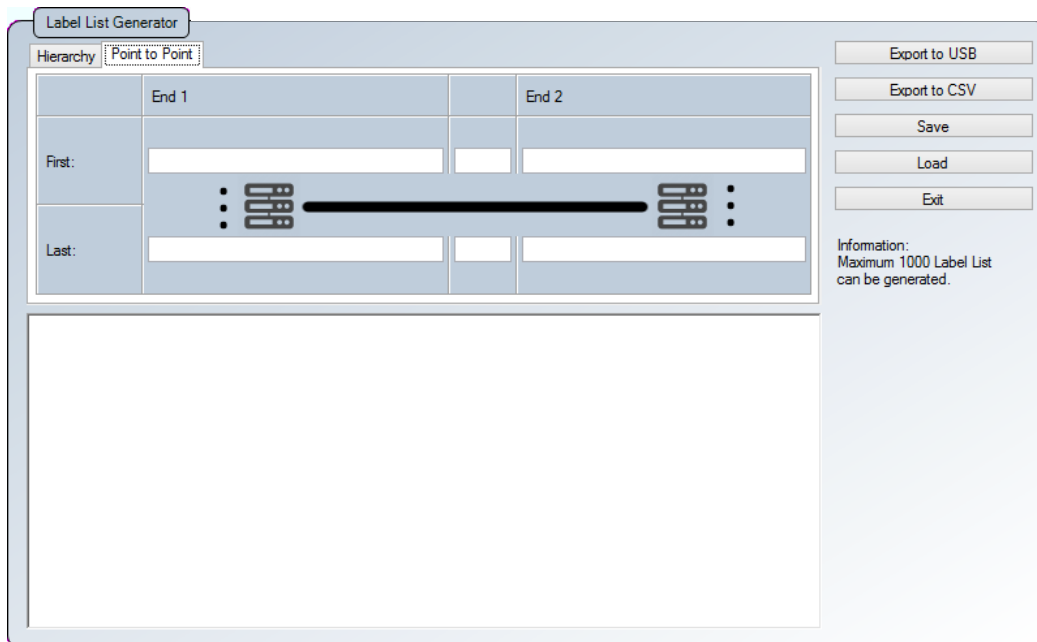


Example:

Start With	End With	Labels Generated
BuildingName-Floor_01	BuildingName-Floor_10	10
BldName-L01-RoomA	BldName-L01-RoomF	6 <i>Labels ending with alphabets will also be increased.</i>
BldName-#01-RoomA-A1	BldName-#02-Room-B5	20 <i>Labels generated:</i> <i>BldName-#01-Room-A1~A5</i> <i>BldName-#01-Room-B1~B5</i> <i>BldName-#02-Room-A1~A5</i> <i>BldName-#02-Room-B1~B5</i>

List-Based Testing – Point to Point

The Point-to-Point label generator creates labels for straight forward connections from Point A to Point B such as Backbone or connections terminations between two panels.



Exporting test results into J-Report PC Software

Refer to *User Manual – Certifier Copper Certification* for more information on exporting test results into J-Report PC Software.

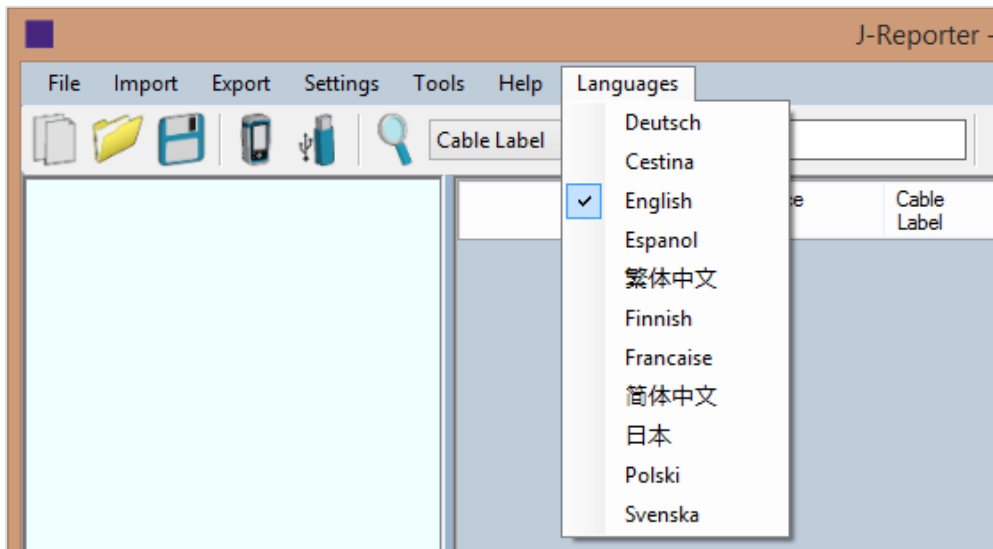
Refer *User Manual – J-Report* for more information on how to use the software.

Chapter 6: Localisations

Selecting the Language

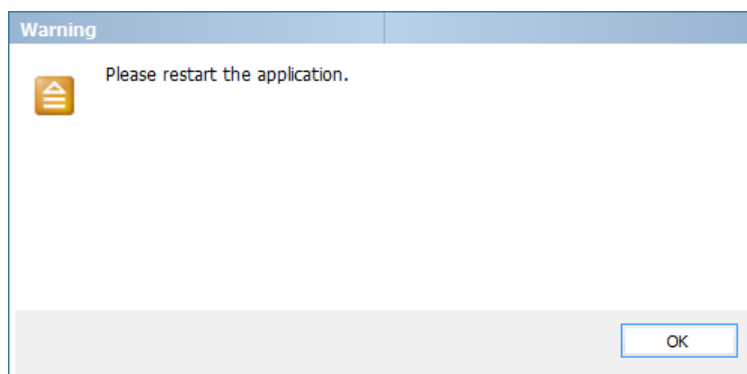
Viavi Solutions has made the following languages available – Deutsch, Finnish, Simplified & Traditional Chinese, Francaise to the default English.

1. Go to Languages and choose your preferred language.





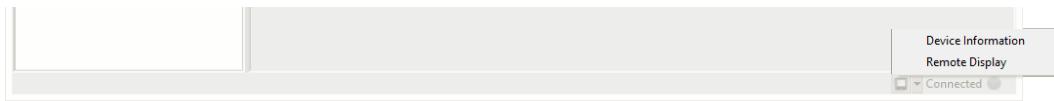
2. You will be prompted to restart J-Reporter.

Click 'OK' to restart.

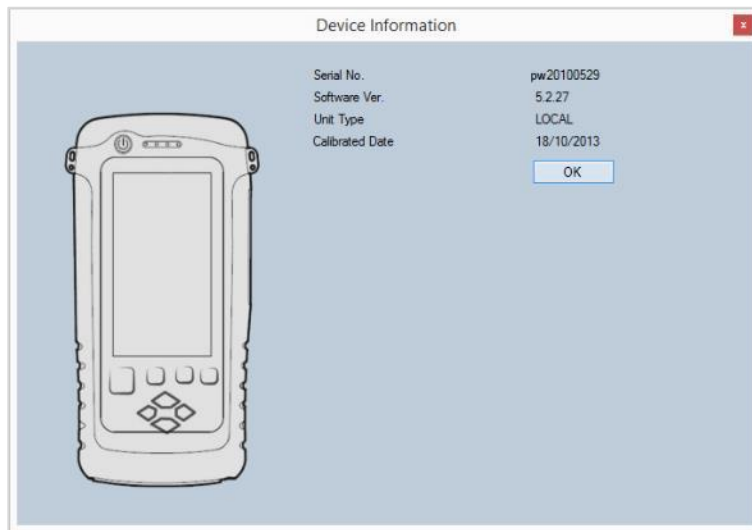


Viewing the Device on your Workstation

1. After Certifier is connected to your workstation, click the device icon  next to the **Connected**  indication on the status bar.



2. Choose 'Device Information' to view the device's serial number, software version and calibration date.



Choose 'Remote Display' to access the Local unit remotely via your workstation.

Accessing this option will allow advanced functions such as screen capturing (image), action recording (video), screen magnifying (zoom), etc.



Viavi Solutions

North America: (Toll Free) 1-844-GO-VIAMI / 1-844-468-4284

All other regions: www.viavisolutions.com/contacts

Email: customer.care@viavisolutions.com